



Mukwonago Fire Department Annual Report 2021

www.mukwonagofire.org

Table of Contents

Mission/ Vision Statement.....3
Core Values.....4
Chief’s Report.....5
Role of Mukwonago Fire Department Personnel.....6
Executive Summary.....9

Fire
Total Number of Incidents/Ave. Number of Responders.....10
Fire Incidents by District.....10
Mutual Aid Received/Given.....11
Fire Loss and Saved.....13
Fire Incident Type.....13
Fire Incident Alarm Time Analysis.....14
Fire Incident by Day of the Week/Shift.....15

Emergency Medical Services
EMS Runs by City.....16
Times of EMS calls by Day of the Week.....17
Ambulance Primary Role of Unit.....19
Transport Hospital.....20
Inter-facility Transfer Information.....21
Provider Primary Impression.....22
CPR Report.....25

Training
Public Education and Prevention Programs/Training Analysis.....29

Apparatus
Engines.....34
Aerial/Specialty Apparatus.....35
Water Operations.....36
Personnel Vehicles.....36
Ambulances.....37



Mission Statement

It is the mission of the Mukwonago Fire Department to provide a range of programs designed to protect the lives and property of the inhabitants of the Village and Town of Mukwonago from the adverse effects of fire, sudden medical emergencies or exposure to any dangerous condition created by either man or nature.

Vision Statement

The Mukwonago Fire Department will continually strive to exceed our citizen's expectations working within a healthy, safe, and innovative environment that enhances the professional and efficient delivery of emergency services. We also strive to be an organization providing community safety education and information keen to anticipate, influence and embrace change.

Core Values

Integrity – openness, honesty, loyalty, and honor; leading through example to achieve a common goal by actions.

Professional Development – commitment to continually expand the abilities of personnel, encourage continuous education and advancement opportunities as becoming officers.

Accountability – all personnel, management and otherwise providing a level of accountability to each other and the community and the implementation of responsible measuring.

Teamwork – develop and maintain a sense of family camaraderie and loyalty to one another and to the community; provide a sense of help and encouragement for all and by all.

Innovation – progressive, pro-active, modern, open, and creative; open and receptive to all input and feedback

Chief's Report

I appreciate you taking the time to see who we are and what we do. Should you have further questions or are interested in joining this organization you can contact us. We are always looking for additional highly motivated and team-oriented people to join our staff.

Fire inspections were on hold for early 2021 as the emergency order by Governor Evers stayed in place. I am excited to announce we were able to hold our annual Fire Prevention Week Open house. It was a great success, large public turnout and beautiful weather and fun had by all.

2021 Mukwonago FD transitioned dispatching services to Waukesha County Communications Center (WCCC). WCCC provides for pre-alerting incidents, dispatching immediately, following up with coded emergencies. WCCC provides for a dedicated Fire Dispatcher, auto aid and predetermined response plans. Interoperability between county agencies was another determining factor. MFD total call volume reached 2377 calls for 2021. MFD responded to 32 more EMS calls and 43 more Fire requests, overall, 3.3% increase in call volume. MFD continued providing inter-facility transports when available.

Mukwonago Fire Department took delivery of new 2020 Rosenbauer Commander Pumper-Tender. This truck carries 2,500 gallons of water, pump and roll capability, used for minimal staffing, and utilized as two apparatus.

The department consists of Paid on Call (POC), Paid on Premise (POP) and 7 full time staff, including the Fire Chief. There are two POP staff from 6am to 6pm Monday through Friday and two POP 0800-1800hrs and one POP 0600-1800hrs on the weekends. POC staff 6pm to 6am seven days a week on a rotating schedule. POC membership is declining nationally and MFD is not immune to this trend. The shortage of available trained individuals', and recruitment of POC/POP staff is becoming an increasing challenge. In **2021 75.43% of the available POP shifts were filled. 2,453 hours were not filled, equating to 204- 12 hour shifts of the year the department was short staffed.** As we examine our operations, we have taken an emphasis on transitional firefighting and trying to predict fire flow, while working with minimal staffing models. Several departments continue to hire fulltime staff, resulting in decreasing retention. 2012 to 2021 MFD has hired 154 individuals and lost 155 individuals, 100% turnover. This model is becoming increasingly common.

The Mukwonago Fire Department Study examined administration, staffing, operations, future growth, and needs was completed in fall 2019. The study presented 43 recommendations. Staff have addressed many of the recommendations in all categories. The study recommends a full-time staffing level of 5 personnel per day (15 total), current daily staffing is 2 full time personnel. The department has been working closely with the respective boards on how to address this issue. We expect further direction and possible action early 2022. For additional information please contact me.

Everyone is welcome at any time to stop in, meet your firefighters, and look at your apparatus. As well as responding to calls, members have spent numerous hours in training and education to keep their skills at top levels. Enjoy the following more detailed information in the following pages.

Sincerely,
Jeffrey R. Stien
Fire Chief

Role of Mukwonago Fire Department Personnel

Save life, Protect Property, Render Assistance... IN ADDITION...

The role of today's fire department personnel is quite different from that of years past. The fire service is constantly changing to meet the needs of the community under ever changing times.

Mukwonago Fire Department Personnel need to possess certain attributes to be successful in the role of Firefighter/EMT's: commitment, dedication, integrity, confidence, resilience, adaptability, effective communication skills.

A common image of the firefighter is that of fighting fires. The reality is this is a small fraction of the role. Personnel are cross trained in firefighting and EMS skills. This is effective utilization of the limited number of personnel on the Mukwonago Fire Department. Fire and EMS personnel function in a multi-faceted role within these common areas:

Prevention

Bi-annual inspections and education activities that prevent fire, aid in rapid extinguishment, or limiting the loss of life and property.

- Business, school, residential facility, and home safety inspections
- Education presentations in daycare facilities and schools
- Facility tours
- Open house and other public relations activities to enhance the public's perception of the Mukwonago Fire Department.
- Maintain excellent working relationships with other local departments such as Police and Department of Public Works.

Preparation

Maintaining all aspects of the Mukwonago Fire Department and its Personnel in a state of readiness.

- Routine apparatus and equipment check – observing and checking for needed repairs, replacement, expirations and deficiencies
- Cleaning – apparatus and equipment will last longer and function more effectively. Station cleaning is also important in preparation should the need to open our doors for displaced members of the community.

- Personnel ensuring their own fitness levels are such that they are prepared for the physically and mentally demanding work.
- In house training monthly for EMT's, Paramedics, Fire Department, Duty Company, and Dive Team.
- External training at WCTC, Gateway Technical College, seminars, or other experiential opportunities to further the knowledge of Mukwonago Fire Department Personnel and to stay current with ever changing technologies.
- Perform administration duties related to records and documentation, thus promoting an overall efficient operation of the Mukwonago Fire Department.

Protection

Programs in place to protect Mukwonago Fire Department Personnel and the community in the event of an emergency.

- Vaccinations against influenza, scheduled personal protective equipment inspections and routine cleaning.
- Annual SCBA flow and fit tests
- Annual apparatus pump testing, ladder testing and hose testing
- Fire Code and ordinance enforcement.
- New turnout gear with Cancer barrier

Response

Putting necessary items into place to expedite the response of Mukwonago Fire Department in the event of an emergency, and safely mitigate any incident.

- Driver training and education regarding safe and prompt responses.
- Familiarizing all personnel with the Mukwonago community.
- Familiarizing personnel in the use of GPS units in all apparatus.
- Being prepared for incidents that not only involve fire and medical emergencies but also:
 - Motor vehicle accidents
 - Hazardous materials leaks
 - Railroad incidents
 - Water and Ice emergencies
 - Natural disasters
 - Any other response for which requested.
- Operate apparatus such as engines, aerial devices, water tenders, trailers, ambulances, and support vehicles within the vehicle's design parameters so that the apparatus is used safely and effectively.

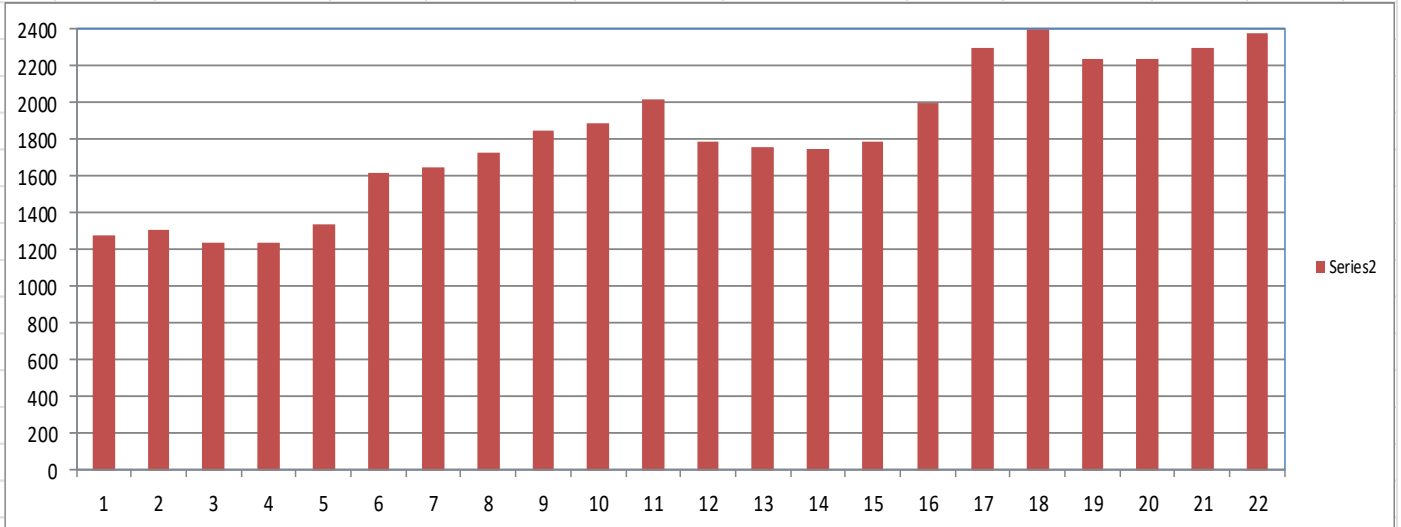
- Responsible for all firefighting duties involved in the incident necessary to save lives and property, combat, extinguish and/or prevent fires
- Effectively perform these duties as required under emergency conditions frequently involving considerable hazards.
- Provide medical assistance and administer medical procedures to stabilize a patient's condition and prepare them for transport to medical care facilities.
- Safely perform rescue operations for the victim and rescue personnel.

Executive Summary

Number of Annual Fire and EMS Calls Per Year

Year	Total	Total % Change	EMS	EMS % Change	Transfers	Transfer % Change	Fire	Fire % Change
2000	1277	0.0			0			
2001	1312	2.7			0	0.0		
2002	1239	-5.6			0	0.0		
2003	1241	0.2			0	0.0		
2004	1342	8.1			0	0.0		
2005	1615	20.3			0	0.0		
2006	1646	1.9	1361		0	0.0	285	
2007	1730	5.1	1426	4.8	0	0.0	304	6.7
2008	1845	6.6	1537	7.8	0	0.0	308	1.3
2009	1883	2.1	1625	5.7	0	0.0	258	-16.2
2010	2015	7.0	1694	4.2	0	0.0	321	24.4
2011	1791	-11.1	1563	-7.7	0	0.0	228	-29.0
2012	1756	-2.0	1508	-3.5	0	0.0	248	8.8
2013	1745	-0.6	1497	-0.7	0	0.0	248	0.0
2014	1784	2.2	1531	2.3	0	0.0	253	2.0
2015	1998	12.0	1357	-11.4	362	0.0	279	10.3
2016	2298	15.0	1206	-11.1	814	124.9	278	-0.4
2017	2399	4.4	1246	3.3	871	7.0	282	1.4
2018	2241	-6.6	1218	-2.2	776	-10.9	247	-12.4
2019	2234	-0.3	1241	1.9	729	-6.1	264	6.9
2020	2302	3.0	1282	3.3	781	7.1	239	-9.5
2021	2377	3.3	1327	3.5	768	-1.7	282	18.0
% Inc.	86.14							

Inter-Facilities 07-06-15



Agency Name	Total Number of Incidents	Total Number of Responders	Average
Mukwonago Fire Department	2,377	7,251	3.05

Fire/ EMS Incidents by District

Basic Incident Zone/District	Number of Incidents
Other	23
Big Bend	33
Eagle	93
East Troy	112
Hartland	3
Lauderdale LaGrange	1
Lake Country	2
Menomonee Falls	1
MUF01- Village	892
MUF02- Village	849
MUF03- Town	106
MUF04- Town	135
MUF05- Town	69
North Prairie	17
Palmyra	2
Tess Corners	1
Tichigan	2
Burlington- Town	1
Vernon	15
Village of Waukesha	10
Waukesha- City	1
Western Lakes	9
Total	2377

Fire/ EMS Mutual Aid Given and Received

Mutual Aid Given			Mutual Aid Received		
FDID	Basic Incident Type Code And Description	Number of Incidents	Basic Incident Type Code And Description	Number of Incidents	
28110	3213 - Intercept	1	100 - Fire, other	1	
			111 - Building fire	1	
51050	111 - Building fire	2	114 - Chimney or flue fire, confined to chimney or flue	1	
51050	571 - Cover assignment, standby, moveup	1	134 - Water vehicle fire	1	
			142 - Brush or brush-and-grass mixture fire	1	
51080	111 - Building fire	2	311 - Medical assist, assist EMS crew	9	
51080	341 - Search for person on land	1	321 - EMS call, excluding vehicle accident with injury	4	
			3213 - Intercept	1	
51120	3213 - Intercept	1	322 - Motor vehicle accident with injuries	6	
			324 - Motor vehicle accident with no injuries.	3	
64050	3213 - Intercept	1	354 - Trench/below-grade rescue	1	
			611 - Dispatched and cancelled en route	2	
64090	143 - Grass fire	1	631 - Authorized controlled burning	1	
			651 - Smoke scare, odor of smoke	1	
64120	321 - EMS call, excluding vehicle accident with injury	1	733 - Smoke detector activation due to malfunction	1	
64120	3213 - Intercept	2	735 - Alarm system sounded due to malfunction	1	
			746 - Carbon monoxide detector activation, no CO	1	
64130	111 - Building fire	1			
64130	131 - Passenger vehicle fire	1	Total	36	
64130	311 - Medical assist, assist EMS crew	1			
64130	321 - EMS call, excluding vehicle accident with injury	4			
64130	3213 - Intercept	82			
64130	322 - Motor vehicle accident with injuries	2			
64130	551 - Assist police or other governmental agency	1			
64130	611 - Dispatched and cancelled en route	3			
67030	142 - Brush or brush-and-grass mixture fire	1			
67060	3212 - Interfacility Transfer	1			
67080	111 - Building fire	4			
67080	143 - Grass fire	1			
67080	311 - Medical assist, assist EMS crew	1			
67080	321 - EMS call, excluding vehicle accident with injury	1			
67080	571 - Cover assignment, standby, moveup	1			
67080	611 - Dispatched and cancelled en route	2			
67130	111 - Building fire	1			
67130	321 - EMS call, excluding vehicle accident with injury	1			
67130	322 - Motor vehicle accident with injuries	1			
67130	341 - Search for person on land	1			
67130	381 - Rescue or EMS standby	1			
67130	571 - Cover assignment, standby, moveup	2			
67140	111 - Building fire	2			
67140	311 - Medical assist, assist EMS crew	1			
67140	321 - EMS call, excluding vehicle accident with injury	6			
67140	3213 - Intercept	41			
67140	360 - Water & ice-related rescue, other	1			
67140	611 - Dispatched and cancelled en route	3			
67150	321 - EMS call, excluding vehicle accident with injury	1			
67150	571 - Cover assignment, standby, moveup	1			
67210	111 - Building fire	1			
67210	571 - Cover assignment, standby, moveup	1			
67230	321 - EMS call, excluding vehicle accident with injury	2			
67230	3213 - Intercept	2			
67230	322 - Motor vehicle accident with injuries	1			
67230	611 - Dispatched and cancelled en route	1			
67310	111 - Building fire	2			
67340	111 - Building fire	2			
67340	141 - Forest, woods or wildland fire	1			
67340	611 - Dispatched and cancelled en route	1			
67340	711 - Municipal alarm system, malicious false alarm	1			
67340	735 - Alarm system sounded due to malfunction	1			
67360	311 - Medical assist, assist EMS crew	1			
67360	321 - EMS call, excluding vehicle accident with injury	2			
67360	3213 - Intercept	14			
67360	322 - Motor vehicle accident with injuries	1			
67360	324 - Motor vehicle accident with no injuries.	1			
Total		218			

Mutual aid requests are made when additional resources or staffing are needed. Exceeding the current resources or when there is no staffing to handle the call due to being on multiple or other calls. Mukwonago FD is part of MABAS Division 106. The mutual aid requests listed above include both fire and EMS.

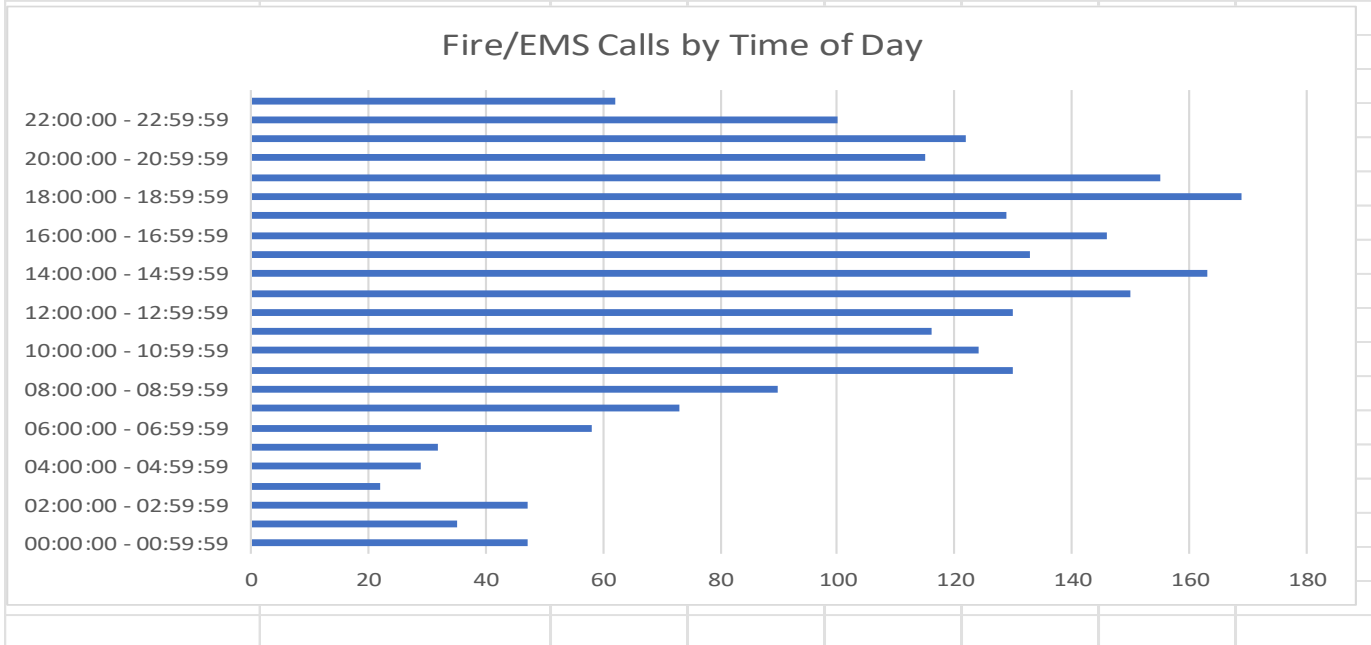
2021 Annual Report Mukwonago Fire Department

Fire/ EMS Incident Type

Incident Type	Basic Incident Type Code And Description	Incidents	Percent	Prop Loss	Cont Loss	Total Loss	Loss Percent
1 - Fire	100 - Fire, other	1	0.04%				
1 - Fire	111 - Building fire	19	0.80%	5,000		5,000	7.12%
1 - Fire	114 - Chimney or flue fire, confined to chimney or flue	1	0.04%				
1 - Fire	131 - Passenger vehicle fire	2	0.08%	5,000	200	5,200	7.41%
1 - Fire	134 - Water vehicle fire	1	0.04%	10,000	50,000	60,000	85.47%
1 - Fire	141 - Forest, woods or wildland fire	1	0.04%				
1 - Fire	142 - Brush or brush-and-grass mixture fire	2	0.08%	0	0	0	0%
1 - Fire	143 - Grass fire	4	0.17%	0	0	0	0%
1 - Fire	151 - Outside rubbish, trash or waste fire	1	0.04%				
3 - Rescue & EMS	311 - Medical assist, assist EMS crew	20	0.84%				
3 - Rescue & EMS	321 - EMS call, excluding vehicle accident with injury	922	38.79%				
3 - Rescue & EMS	3212 - Interfacility Transfer	803	33.78%				
3 - Rescue & EMS	3213 - Intercept	145	6.10%				
3 - Rescue & EMS	322 - Motor vehicle accident with injuries	46	1.94%				
3 - Rescue & EMS	324 - Motor vehicle accident with no injuries.	23	0.97%				
3 - Rescue & EMS	331 - Lock-in (if lock out , use 511)	2	0.08%				
3 - Rescue & EMS	341 - Search for person on land	2	0.08%				
3 - Rescue & EMS	354 - Trench/below-grade rescue	1	0.04%				
3 - Rescue & EMS	360 - Water & ice-related rescue, other	1	0.04%				
3 - Rescue & EMS	381 - Rescue or EMS standby	2	0.08%				
4 - Hazardous Condition (No Fire)	411 - Gasoline or other flammable liquid spill	1	0.04%				
4 - Hazardous Condition (No Fire)	412 - Gas leak (natural gas or LPG)	6	0.25%				
4 - Hazardous Condition (No Fire)	413 - Oil or other combustible liquid spill	5	0.21%				
4 - Hazardous Condition (No Fire)	423 - Refrigeration leak	1	0.04%				
4 - Hazardous Condition (No Fire)	424 - Carbon monoxide incident	1	0.04%				
4 - Hazardous Condition (No Fire)	440 - Electrical wiring/equipment problem, other	3	0.13%				
4 - Hazardous Condition (No Fire)	444 - Power line down	9	0.38%				
4 - Hazardous Condition (No Fire)	445 - Arcing, shorted electrical equipment	9	0.38%				
4 - Hazardous Condition (No Fire)	463 - Vehicle accident, general cleanup	1	0.04%				
5 - Service Call	500 - Service call, other	4	0.17%				
5 - Service Call	510 - Person in distress, other	1	0.04%				
5 - Service Call	511 - Lock-out	3	0.13%				
5 - Service Call	522 - Water or steam leak	1	0.04%				
5 - Service Call	542 - Animal rescue	1	0.04%				
5 - Service Call	550 - Public service assistance, other	3	0.13%				
5 - Service Call	551 - Assist police or other governmental agency	8	0.34%				
5 - Service Call	553 - Public service	2	0.08%				
5 - Service Call	561 - Unauthorized burning	2	0.08%				
5 - Service Call	571 - Cover assignment, standby, moveup	12	0.50%				
6 - Good Intent Call	600 - Good intent call, other	1	0.04%				
6 - Good Intent Call	611 - Dispatched and cancelled en route	194	8.16%				
6 - Good Intent Call	622 - No incident found on arrival at dispatch address	19	0.80%				
6 - Good Intent Call	631 - Authorized controlled burning	5	0.21%				
6 - Good Intent Call	651 - Smoke scare, odor of smoke	11	0.46%				
6 - Good Intent Call	671 - HazMat release investigation w/no HazMat	1	0.04%				
7 - False Alarm & False Call	700 - False alarm or false call, other	2	0.08%				
7 - False Alarm & False Call	711 - Municipal alarm system, malicious false alarm	1	0.04%				
7 - False Alarm & False Call	733 - Smoke detector activation due to malfunction	6	0.25%				
7 - False Alarm & False Call	734 - Heat detector activation due to malfunction	2	0.08%				
7 - False Alarm & False Call	735 - Alarm system sounded due to malfunction	8	0.34%				
7 - False Alarm & False Call	736 - CO detector activation due to malfunction	5	0.21%				
7 - False Alarm & False Call	740 - Unintentional transmission of alarm, other	1	0.04%				
7 - False Alarm & False Call	741 - Sprinkler activation, no fire - unintentional	3	0.13%				
7 - False Alarm & False Call	743 - Smoke detector activation, no fire - unintentional	3	0.13%				
7 - False Alarm & False Call	744 - Detector activation, no fire - unintentional	4	0.17%				
7 - False Alarm & False Call	745 - Alarm system activation, no fire - unintentional	27	1.14%				
7 - False Alarm & False Call	746 - Carbon monoxide detector activation, no CO	1	0.04%				
8 - Severe Weather & Natural	800 - Severe weather or natural disaster, other	8	0.34%				
8 - Severe Weather & Natural	814 - Lightning strike (no fire)	3	0.13%				
Total		2377	100.00%	20000	50200	70200	100.00%

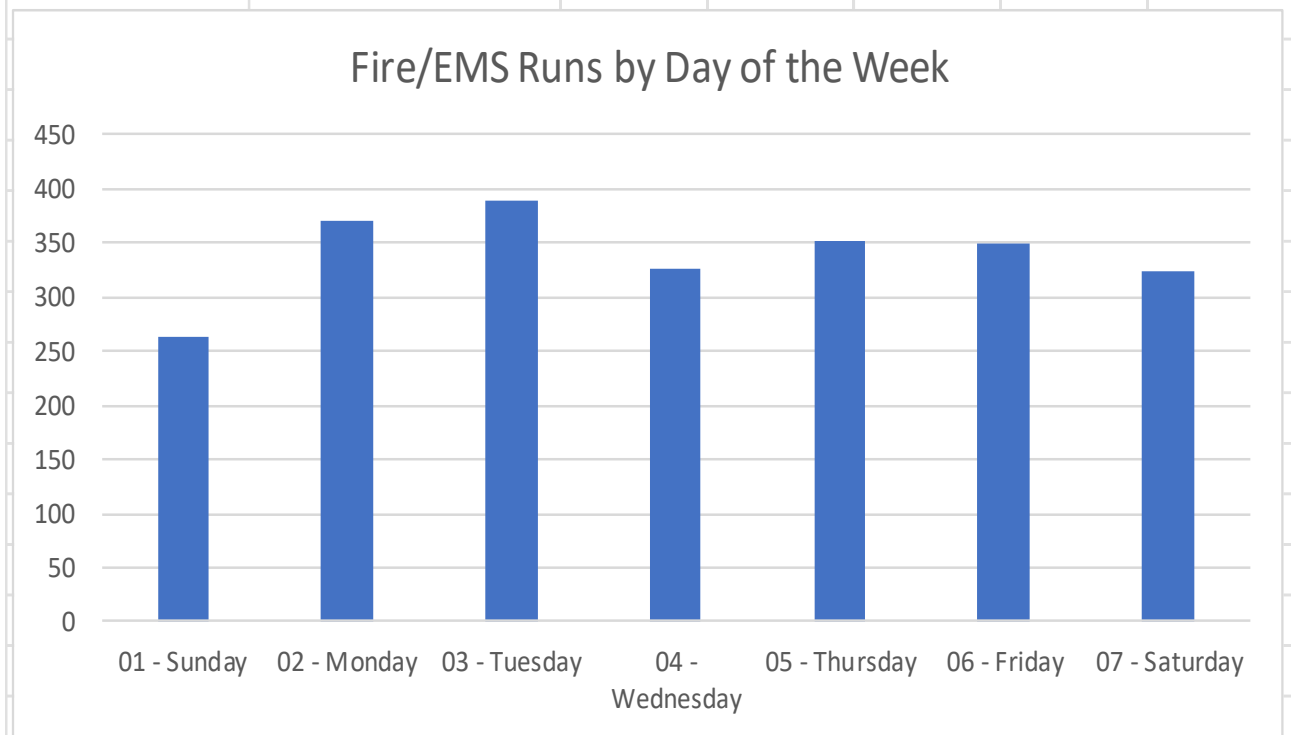
Fire/ EMS Incidents Alarm Time Analysis

Hour of Day	Number of Incidents
00:00:00 - 00:59:59	47
01:00:00 - 01:59:59	35
02:00:00 - 02:59:59	47
03:00:00 - 03:59:59	22
04:00:00 - 04:59:59	29
05:00:00 - 05:59:59	32
06:00:00 - 06:59:59	58
07:00:00 - 07:59:59	73
08:00:00 - 08:59:59	90
09:00:00 - 09:59:59	130
10:00:00 - 10:59:59	124
11:00:00 - 11:59:59	116
12:00:00 - 12:59:59	130
13:00:00 - 13:59:59	150
14:00:00 - 14:59:59	163
15:00:00 - 15:59:59	133
16:00:00 - 16:59:59	146
17:00:00 - 17:59:59	129
18:00:00 - 18:59:59	169
19:00:00 - 19:59:59	155
20:00:00 - 20:59:59	115
21:00:00 - 21:59:59	122
22:00:00 - 22:59:59	100
23:00:00 - 23:59:59	62
Total	2377



Fire/ EMS Incidents by the Day of the Week

Day of Week	Number of Incidents					
01 - Sunday	264					
02 - Monday	371					
03 - Tuesday	390					
04 - Wednesday	327					
05 - Thursday	352					
06 - Friday	350					
07 - Saturday	323					
Total	2377					



Emergency Medical Services



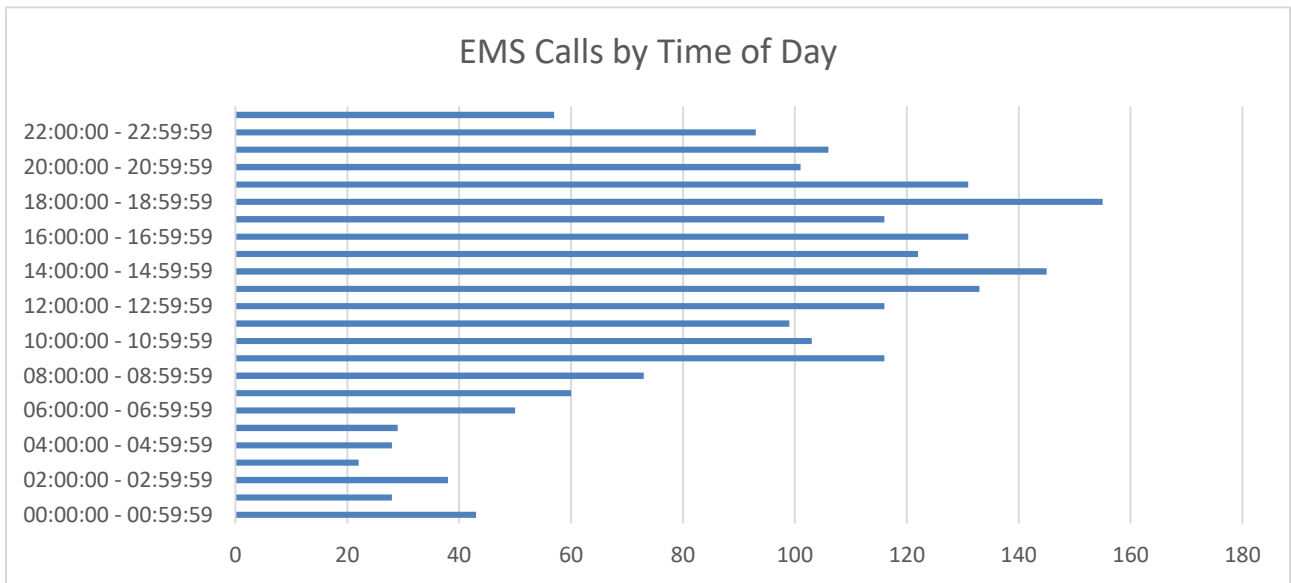
EMS Runs by City

Incident City Name	Number of Runs	Percent of Total Runs
Mukwonago Village	1,561	74.51%
Mukwonago Town	254	12.12%
Big Bend	27	1.29%
Delafield	1	0.05%
Eagle Town	41	1.96%
Eagle Village	45	2.15%
East Troy	54	2.58%
Hartland	1	0.05%
LAFT_T	5	0.24%
North Prairie	14	0.67%
Ottawa	1	0.05%
RACICO	2	0.10%
SPRP_T	2	0.10%
SUMM_V	1	0.05%
TROY_T	3	0.14%
Vernon	6	0.29%
WALWCO	2	0.10%
Waukesha City	1	0.05%
	74	3.53%
Total	2,095	100.00%

EMS Calls by Time of Day

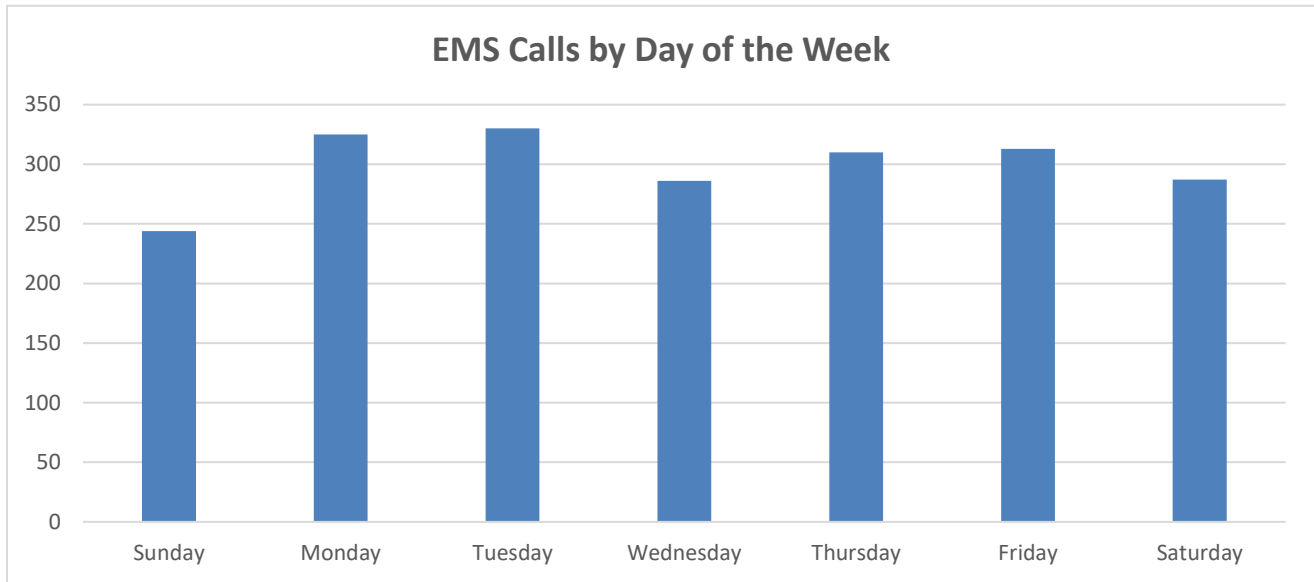
Incident Hour Range	Number of Runs	Percent of Total Runs
00:00:00 - 00:59:59	43	2.05%
01:00:00 - 01:59:59	28	1.34%
02:00:00 - 02:59:59	38	1.81%
03:00:00 - 03:59:59	22	1.05%
04:00:00 - 04:59:59	28	1.34%
05:00:00 - 05:59:59	29	1.38%
06:00:00 - 06:59:59	50	2.39%
07:00:00 - 07:59:59	60	2.86%
08:00:00 - 08:59:59	73	3.48%
09:00:00 - 09:59:59	116	5.54%
10:00:00 - 10:59:59	103	4.92%
11:00:00 - 11:59:59	99	4.73%
12:00:00 - 12:59:59	116	5.54%
13:00:00 - 13:59:59	133	6.35%
14:00:00 - 14:59:59	145	6.92%
15:00:00 - 15:59:59	122	5.82%
16:00:00 - 16:59:59	131	6.25%
17:00:00 - 17:59:59	116	5.54%
18:00:00 - 18:59:59	155	7.40%
19:00:00 - 19:59:59	131	6.25%
20:00:00 - 20:59:59	101	4.82%
21:00:00 - 21:59:59	106	5.06%
22:00:00 - 22:59:59	93	4.44%
23:00:00 - 23:59:59	57	2.72%

Total	2095	100.00%
--------------	-------------	----------------



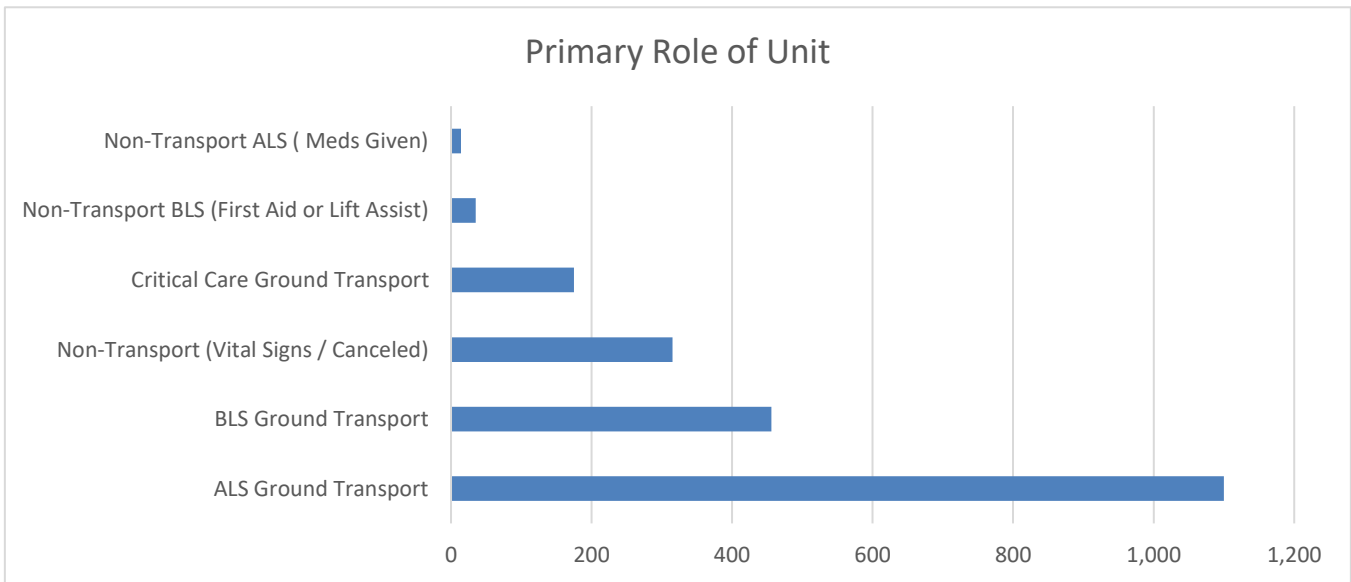
2021 Annual Report Mukwonago Fire Department

Incident Day Name	Number of Runs	Percent of Total Runs
Sunday	244	11.65%
Monday	325	15.51%
Tuesday	330	15.75%
Wednesday	286	13.65%
Thursday	310	14.80%
Friday	313	14.94%
Saturday	287	13.70%
Total	2095	100.00%



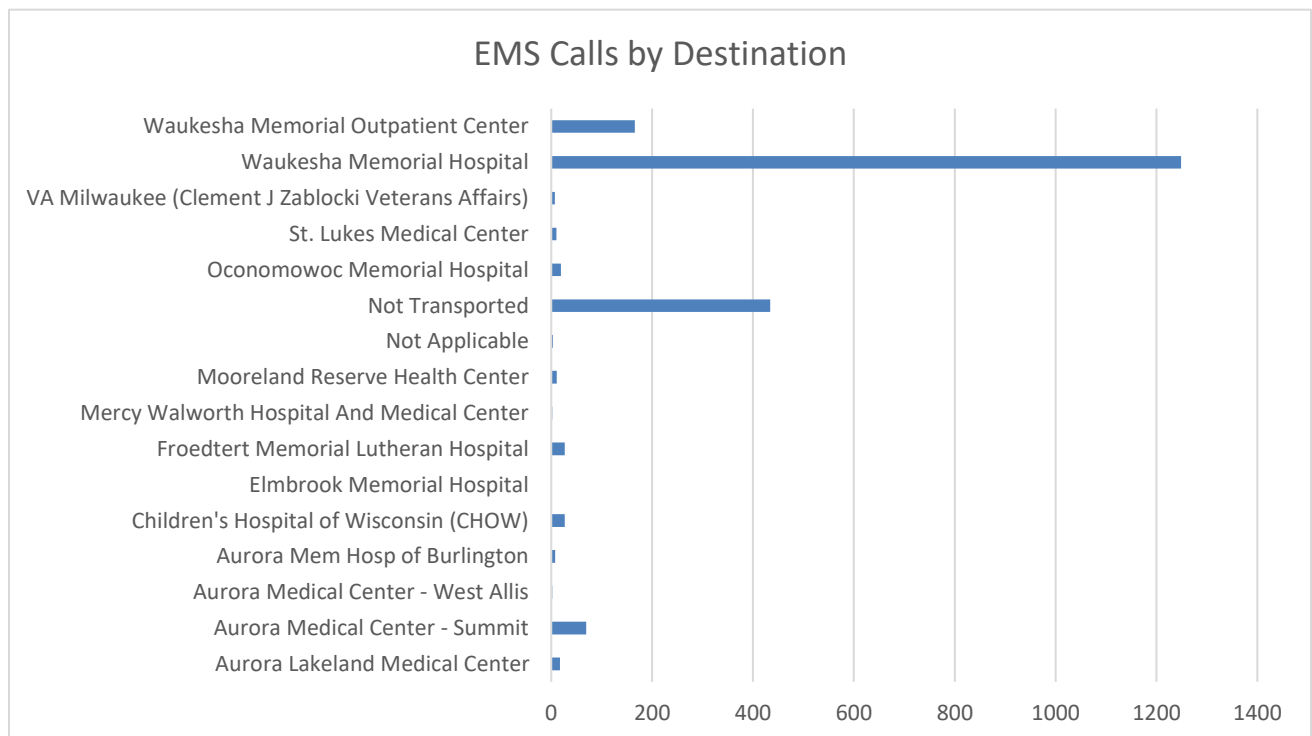
Ambulance Primary Role

Primary Role of Unit	Number of Runs	Percent of Total Runs
ALS Ground Transport	1,100	52.51%
BLS Ground Transport	456	21.77%
Non-Transport (Vital Signs / Canceled)	315	15.04%
Critical Care Ground Transport	175	8.35%
Non-Transport BLS (First Aid or Lift Assist)	35	1.67%
Non-Transport ALS (Meds Given)	14	0.67%
Total	2,095	100.00%



EMS Calls by Destination

Disposition Destination Name	Destination Code	Number of Runs	Percent of Total Runs
		43	2.05%
Aurora Lakeland Medical Center	132	17	0.81%
Aurora Medical Center - Summit	316	69	3.29%
Aurora Medical Center - West Allis	149	2	0.10%
Aurora Mem Hosp of Burlington	14	8	0.38%
Children's Hospital of Wisconsin (CHOW)	135	27	1.29%
Elmbrook Memorial Hospital	183	1	0.05%
Froedtert Memorial Lutheran Hospital	232	27	1.29%
Mercy Walworth Hospital and Medical Center	6023	2	0.10%
Mooreland Reserve Health Center	233	11	0.53%
Not Applicable		3	0.14%
Not Transported	6024	434	20.72%
Oconomowoc Memorial Hospital	113	19	0.91%
St. Lukes Medical Center	160	10	0.48%
VA Milwaukee (Clement J Zablocki Veterans Affairs)	125503	7	0.33%
Waukesha Memorial Hospital	41	1,249	59.62%
Waukesha Memorial Outpatient Center	42	166	7.92%
Total		2095	100.00%



EMS Inter-Facility Transfers

	2015	2016		2017		2018		2019		2020		2021	
		Admissions	Transfers	Admissions	Transfers	Admissions	Transfers	Admissions	Transfers	Admissions	Transfers	Admissions	Transfers
January	None	103	6	113	13	106	10	94	8	100	13	102	10
February	None	71	10	80	6	78	8	100	12	112	12	96	5
March	None	96	10	82	13	90	9	98	9	97	9	110	7
April	None	83	5	106	12	100	14	115	17	88	9	107	3
May	None	95	15	84	9	96	8	118	19	92	4	101	9
June	None	86	8	70	15	93	5	99	10	114	9	109	8
July	95	80	4	90	8	116	12	84	19	121	5	122	7
August	121	105	6	93	9	90	10	103	6	111	6	119	8
September	100	81	11	89	10	93	8	109	10	126	8	120	9
October	90	69	14	90	11	95	9	98	10	119	5	133	7
November	93	96	4	87	10	89	10	109	13	115	10	121	17
December	92	108	9	111	13	108	15	124	17	105	12	156	20
Total	591	1073	102	1095	129	1154	118	1251	150	1300	102	1396	110
	591		1175		1224		1272		1401		1402		1506
% Increase					4.17		3.92		10.14		0.07		7.42
MFD Transports	362		814		871		776		729		781		768
MFD % Taken	61.25		69.28		71.16		61.01		52.03		55.71		51.00

ProHealth Care (PHC) provided the number of admission (PHC to PHC facility) and transfer (PHC to other than PHC facility) requests related to the Mukwonago ER. The total numbers include any inter-facility transport request. This includes other than a ProHealth Care facility. The percentage transported by Mukwonago FD declined in 2018 and 2019. This is direct result of freezing a Paid-on Premise (POP) position, meaning it was not opened to be filled due to budgetary restraints. Other causes include available staffing for POP were lower due to several staff being hired full time to other fire departments and hiring pool has declined.

2021 Annual Report Mukwonago Fire Department

Situation Provider Primary Impression	Number of Runs	Percent of Total Runs
	176	8.40%
History of falling (Z91.81)	133	6.35%
Weakness (R53.1)	114	5.44%
Acute abdomen (R10.0)	105	5.01%
Acute pain, not elsewhere classified (G89.1)	87	4.15%
Infection (Unknown Source) (A31)	83	3.96%
Cardiac arrhythmia/dysrhythmia (I49.9)	66	3.15%
Not Applicable	64	3.05%
Pneumonia, unspecified (J18.9)	60	2.86%
Chest pain, unspecified (R07.9)	50	2.39%
Syncope and collapse (R55)	50	2.39%
Generalized abdominal pain (R10.84)	45	2.15%
Stroke (I63.9)	43	2.05%
Cardiac Arrest (I46.9)	42	2.00%
Respiratory distress, acute (J80)	42	2.00%
Repeated falls (R29.6)	41	1.96%
Altered mental status (R41.82)	39	1.86%
Back Pain (M54.9)	35	1.67%
Dizziness and giddiness (R42)	34	1.62%
CHF (I50.9)	33	1.58%
GI Bleed (K29.71)	30	1.43%
Respiratory disorder, unspecified (J98.9)	30	1.43%
COPD with exacerbation (J44.1)	26	1.24%
Influenza, unspecified (Flu) (J11)	24	1.15%
Injury of head (S09.90)	24	1.15%
Septicemia (1); or Sepsis (2) (A41.9)	24	1.15%
Angina (1); or Ischemic chest pain (2) (I20.9)	23	1.10%
Seizures without status epilepticus (G40.909)	23	1.10%
Behavioral / psychiatric disorder (F99)	22	1.05%
Urinary Tract Infection (UTI) (N39.0)	21	1.00%
Injury of hip (S79.91)	20	0.95%
Overdose/Drug Ingestion (itICD.047)	20	0.95%
Appendicitis, acute (K35.80)	19	0.91%
Fever (R50.9)	17	0.81%
Pulmonary embolism (I26)	17	0.81%
Alcohol use, unspecified with intoxication (F10.92)	16	0.76%
TIA (G45.9)	15	0.72%
Injury of wrist, hand, or fingers (S69.9)	14	0.67%
Alcohol dependence with withdrawal, unspecified (F10.239)	13	0.62%
Nausea and vomiting (R11)	13	0.62%
Cardiac Chest Pain (STEMI) Inferior wall (I21.1)	12	0.57%

2021 Annual Report Mukwonago Fire Department

Diabetes with hypoglycemia (1); or Hypoglycemia-Diabetes (2) (E13.64)	12	0.57%
Injury of shoulder or upper arm (S49.9)	12	0.57%
Hypoglycemia, unspecified (E16.2)	11	0.53%
Injury of lower leg (S89.9)	11	0.53%
Diabetes with hyperglycemia (1); or Hyperglycemia-Diabetes (2) (E13.65)	10	0.48%
Headache (R51)	10	0.48%
Injury of lower back (S39.92)	10	0.48%
Non-ST elevation (NSTEMI) myocardial infarction (I21.4)	10	0.48%
Chest Pain, Other [non-cardiac] (R07.89)	9	0.43%
Head bleed (I62.9)	9	0.43%
Injury of face (S09.93)	9	0.43%
Unspecified infectious disease (B99.9)	9	0.43%
Alcohol use, unspecified (F10.9)	8	0.38%
Suicide attempt (T14.91)	8	0.38%
Asthma with exacerbation (J45.901)	7	0.33%
Hypertension (I10)	7	0.33%
Injury of ankle (S99.91)	7	0.33%
Injury of foot (S99.92)	7	0.33%
Nausea with vomiting, unspecified (R11.2)	7	0.33%
Allergic Reaction (T78.40)	6	0.29%
Constipation (K59.00)	6	0.29%
Injury of thigh (upper leg) (S79.92)	6	0.29%
Injury, unspecified (T14.90)	6	0.29%
Uterine or vaginal bleeding, abnormal (N93.9)	6	0.29%
Cancer, unspecified (D49)	5	0.24%
Chronic pain, not elsewhere classified (G89.2)	5	0.24%
Diarrhea (K59.1)	5	0.24%
Epistaxis (Nosebleed) (R04.0)	5	0.24%
Hypotension (I95.9)	5	0.24%
Injury of forearm (S59.91)	5	0.24%
Non-specified Sedative, hypnotic or anxiolytic related disorders (F13)	5	0.24%
Respiratory failure, unspecified (J96.9)	5	0.24%
Other reduced mobility (Z74.09)	4	0.19%
Cardiac Chest Pain (STEMI) Lateral Wall (itICD.078)	3	0.14%
Common cold (J00)	3	0.14%
Croup (J05.0)	3	0.14%
Dehydration (E86.0)	3	0.14%
Injury of neck (S19.9)	3	0.14%
Respiratory distress of newborn (P22)	3	0.14%
Seizures with status epilepticus (G40.901)	3	0.14%
Unspecified visual disturbance (H53.9)	3	0.14%
Acute bronchitis, unspecified (J20.9)	2	0.10%
Anaphylactic shock (T78.2)	2	0.10%

2021 Annual Report Mukwonago Fire Department

Angina, unstable (I20.0)	2	0.10%
Bedridden (Z74.01)	2	0.10%
Cardiac Chest Pain (STEMI) Anterior wall (I21.0)	2	0.10%
Choking (itICD.046)	2	0.10%
Foreign body in respiratory tract, part unspecified (T17.9)	2	0.10%
Heat exhaustion, unspecified (T67.5)	2	0.10%
Injury of abdomen (S39.91)	2	0.10%
Injury of elbow (S59.90)	2	0.10%
Malaise (R53.81)	2	0.10%
Migraine (G43.9)	2	0.10%
Pelvic and perineal pain (R10.2)	2	0.10%
Pneumothorax (J93.9)	2	0.10%
Pregnancy with contractions (O62.0)	2	0.10%
Unspecified chronic gastritis with bleeding (K29.51)	2	0.10%
Acute bronchospasm (J98.01)	1	0.05%
Anemia, unspecified (D64.9)	1	0.05%
Cardiac Chest Pain (STEMI) other sites (I21.2)	1	0.05%
Cardiac Chest Pain (STEMI) Septal Wall (itICD.077)	1	0.05%
Cardiac tamponade (I31.4)	1	0.05%
Cocaine related disorders (F14)	1	0.05%
GERD (K21)	1	0.05%
Heatstroke and sunstroke (T67.0)	1	0.05%
Hypovolemia (E86.1)	1	0.05%
Inhalant related disorders (F18)	1	0.05%
Injury of ear (S09.91)	1	0.05%
Injury of eye and orbit (S05)	1	0.05%
Injury of nose (S09.92)	1	0.05%
Injury of pelvis (S39.93)	1	0.05%
Injury of thorax (upper chest) (S29.9)	1	0.05%
Labor (itICD.049)	1	0.05%
Meningitis (G03.9)	1	0.05%
Not Recorded	1	0.05%
Opioid related disorders (F11)	1	0.05%
Other complications of labor and delivery, not elsewhere classified (O75)	1	0.05%
Other immediate postpartum hemorrhage (O72.1)	1	0.05%
Paraplegia (G82.20)	1	0.05%
Pneumothorax, traumatic (S27.0)	1	0.05%
Postpartum hemorrhage (O72)	1	0.05%
RSV (B97.4)	1	0.05%
Suffocation (1); or Asphyxia (2) (T71.9)	1	0.05%
Tooth pain (K08.8)	1	0.05%

Total	2095	100.00%
--------------	-------------	----------------

2021 CPR Report

The CPR program at the Mukwonago Fire Department has continued to educate the public and offer our citizens the opportunity to become CPR certified. Starting in 2020 we began offering online certification and check offs to our students, to provide more options. This has been a significantly less time consuming and more flexible option for the students to obtain CPR certification. We have also noticed that due to the shortened class time most of the checkoff's can be performed by on shift personnel, meaning we rarely must pay an instructor to come in to teach the class.

For the 2021 year we taught 8 CPR classes, with a total number of 11 students. With the transition to primarily online courses. We paid an instructor to teach one class, totaling 3 hours, for a total cost of \$90. Now the money that we brought in from our CPR classes was \$62, and this includes several classes that we did not charge for CPR due to the students being Mukwonago Fire Department members requiring renewal. Overall, we had a financial difference of negative \$28, for the 2021 year.

The Mukwonago Fire Department

CPR Program

1111 Fox Street

Mukwonago, WI 53149

Phone: (262) 363-6426

Email: learncpr@mukwonagofire.org

MUKWONAGO FIRE DEPARTMENT CPR PROGRAM

Healthcare Provider: 3 Hours	Instructors: \$30/hour
Heartsaver CPR/AED: 5 hours	
Heartsaver CPR/AED/First Aid: 9 hours	

AHA BLS

Date	Students	Instructor	Deposits	Withdrawals
18-Mar	1	0	\$25.00	\$0.00
17-Apr	1	1	\$0.00	\$90.00
23-May	4	0	\$12.00	\$0.00
11-Jul	1	0	\$0.00	\$0.00
19-Jul	1	0	\$25.00	\$0.00
7-Sep	1	0	\$0.00	\$0.00
26-Oct	1	0	\$0.00	\$0.00
26-Oct	1	0	\$0.00	\$0.00
			\$0.00	\$0.00
			\$0.00	\$0.00
			\$0.00	\$0.00
			\$0.00	\$0.00

Heartsaver CPR/AED

Date	Students	Instructor	Deposits	Withdrawals
			\$0.00	\$0.00
			\$0.00	\$0.00
			\$0.00	\$0.00
			\$0.00	\$0.00
			\$0.00	\$0.00

Heartsaver CPR/AED/First Aid

Date	Students	Instructor	Deposits	Withdrawals
			\$0.00	\$0.00
			\$0.00	\$0.00
			\$0.00	\$0.00
			\$0.00	\$0.00
			\$0.00	\$0.00

Heartsaver First Aid

Date	Students	Instructor	Deposits	Withdrawals
			\$0.00	\$0.00
			\$0.00	\$0.00

Bloodborne Pathogens

Date	Students	Instructor	Deposits	Withdrawals
			\$0.00	\$0.00
			\$0.00	\$0.00

Other Classes

Date	Students	Instructor	Deposits	Withdrawals
			\$0.00	\$0.00
			\$0.00	\$0.00

Total	\$62.00	-\$90.00
Difference	-\$28.00	

Payments	\$62.00
Costs	\$90.00
Supplies	#REF!
	#REF!

MUKWONAGO FIRE DEPARTMENT CPR PROGRAM

Healthcare Provider : 6 hours	3 Hours
Heartsaver CPR/AED: 5 hours	
Heartsaver CPR/AED/First Aid: 9 hours	

Instructors: \$30/hour

AHA BLS

Date	Students	Instructor
18-Mar	1	0
17-Apr	1	1
23-May	4	0
11-Jul	1	0
19-Jul	1	0
7-Sep	1	0
26-Oct	1	0
26-Oct	1	0

Deposits	Withdrawals
\$25.00	\$0.00
\$0.00	\$90.00
\$12.00	\$0.00
\$0.00	\$0.00
\$25.00	\$0.00
\$0.00	\$0.00
\$0.00	\$0.00
\$0.00	\$0.00
\$0.00	\$0.00
\$0.00	\$0.00
\$0.00	\$0.00
\$0.00	\$0.00
\$0.00	\$0.00
\$0.00	\$0.00
\$0.00	\$0.00

Heartsaver CPR/AED

Date	Students	Instructor

\$0.00	\$0.00
\$0.00	\$0.00
\$0.00	\$0.00
\$0.00	\$0.00
\$0.00	\$0.00
\$0.00	\$0.00

Heartsaver CPR/AED/First Aid

Date	Students	Instructor

\$0.00	\$0.00
\$0.00	\$0.00
\$0.00	\$0.00
\$0.00	\$0.00
\$0.00	\$0.00
\$0.00	\$0.00

2021 Annual Report Mukwonago Fire Department

Heartsaver First Aid

Date	Students	Instructor

\$0.00	\$0.00
\$0.00	\$0.00

Bloodborne Pathogens

Date	Students	Instructor

\$0.00	\$0.00
\$0.00	\$0.00

Other Classes

Date	Students	Instructor

\$0.00	\$0.00
\$0.00	\$0.00

Total	\$62.00	-\$90.00
Difference	-\$28.00	

Payments	\$62.00
Costs	\$90.00
Supplies	#REF!
	#REF!

2021 Annual Report Mukwonago Fire Department

All Trainings 2021

01/01/2021 to 12/31/2021

Assignment Name	Assignment Type	Hours
05 - FF Personal Protective Equipment	Company Training, NFPA 1001	10.0
07 - Ropes & Knots	Company Training, NFPA 1001	30.0
08 - Ground Ladders	Company Training, NFPA 1001	51.5
13 - Hose Operations & Hose Streams	Company Training, NFPA 1001	95.5
17 - Tech Rescue Support & Vehicle Extrication Operations	Company Training, NFPA 1001	122.0
Administrative/Office Work	Administrative/Fire Meetings	50.8
Aerial 17 Positioning Aerial Apparatus	Driver/Operator Training, NFPA 1002	12.5
Aerial 18 Stabilizing the Apparatus	Driver/Operator Training, NFPA 1002	15.0
Aerial 19 Operating Aerial Apparatus	Driver/Operator Training, NFPA 1002	17.0
ALS Skills Testing	EMS	49.0
Ambulance Orientation	EMS	66.5
Apparatus Committee	Administrative/Fire Meetings	7.5
Blood Glucose	Orientation	0.8
Bloodborne Pathogens	AICC Course	13.0
BLS Skills Training	EMS	100.8
BLS Training	EMS	15.0
Chainsaws	Orientation	13.0
Check it Record Usage	Check it/Target Solutions	5.5
Chief Officer Meeting	Administrative/Fire Meetings	8.5
Commission Meeting	Administrative/Fire Meetings	5.5
Compressor Operation	Orientation	12.0
CPR Instructor Recertification	EMS	6.0
CPR Recertification	EMS	6.0
De-escalation Article	Administrative/Fire Meetings	13.0
Disposing of Controlled Substances	Check it/Target Solutions	3.5
Doty Belt	EMS	8.3
Doty Belt Orientation	Orientation	0.3
Drive on Roadway, NFPA 1002, 4.3	Driver/Operator Training, NFPA 1002	24.5
Driver Operator Engine/Pumper, NFPA 1002, Chapter 5	Driver/Operator Training, NFPA 1002	51.5
Emergency Response to Terrorism (MOD #1)	TS Course	7.0
Emergency Services Instructor Recertification	Fire	2.0
EMS Abdominal Trauma Advanced	TS Course	8.0
EMS Acute Respiratory Distress Syndrome Advanced	TS Course	11.0
EMS Advanced Airways: Intubation and Beyond (2 hours)	TS Course	14.0
EMS Airway Management Advanced (2 hours)	TS Course	20.0
EMS Airway Management Basic	TS Course	7.0
EMS Assessing the Patient with Major Trauma	TS Course	28.0

2021 Annual Report Mukwonago Fire Department

EMS Assessment and Treatment of Submersion Injuries	TS Course	1.0
EMS Assessment and Treatment of Submersion Injuries (Advanced)	TS Course	1.0
EMS Asthma Part 1	TS Course	8.0
EMS Asthma Part 2	TS Course	2.0
EMS Basics of EMS Operations at a Mass Casualty Incident	TS Course	9.0
EMS Behavioral Emergencies Advanced	TS Course	8.0
EMS Bleeding and Shock Advanced	TS Course	8.0
EMS Bleeding and Shock Basic	TS Course	5.0
EMS Capnography	TS Course	8.0
EMS Carbon Monoxide Poisoning	TS Course	5.0
EMS Cardiac Emergencies Advanced	TS Course	10.0
EMS Cardiovascular Anatomy & Physiology Review	TS Course	3.0
EMS Cervical Spine Injuries Part 1 (Advanced)	TS Course	7.0
EMS Clinical Decision-Making	TS Course	1.0
EMS CNS Injuries Advanced	TS Course	7.0
EMS Communication and Documentation	TS Course	10.0
EMS Complete Resuscitation: Integrating Post-Care Advanced	TS Course	22.0
EMS Crime Scene Awareness	TS Course	2.0
EMS Dementia (Advanced)	TS Course	7.0
EMS Dementia: Overview, Assessment, and Care	TS Course	1.0
EMS Detailed Physical Exam	TS Course	1.0
EMS Diabetic Ketoacidosis Advanced	TS Course	10.0
EMS Driving Safety	TS Course	1.0
EMS Endocrine System Emergencies Advanced	TS Course	20.0
EMS Endocrine System Emergencies Basic	TS Course	4.0
EMS Epilepsy	TS Course	16.0
EMS Femur Fractures	TS Course	8.0
EMS Fundamentals of 12 Lead ECG Operation and Interpretation	TS Course	9.0
EMS Geriatric Behavioral Emergencies	TS Course	18.0
EMS Geriatric Emergencies Advanced	TS Course	1.0
EMS Geriatric Emergencies Basic	TS Course	7.0
EMS Gunshot Wounds	TS Course	14.0
EMS Hip Fractures	TS Course	7.0
EMS HIPAA Awareness	TS Course	27.0
EMS Hypothermia Assessment and Treatment	TS Course	1.0
EMS Hypothermia Assessment and Treatment (Advanced)	TS Course	1.0
EMS Incident Command System	TS Course	8.0
EMS Intraosseous Infusion Advanced	TS Course	7.0
EMS Intro to Arrhythmias: Escape Rhythms and Premature Complexes	TS Course	9.0
EMS Intro to Arrhythmias: Tachy-arrhythmias and Fibrillation	TS Course	8.0
EMS Introduction to Hazardous Materials	TS Course	10.0
EMS Managing Cardiac Arrest: During and After Resuscitation	TS Course	14.0
EMS Managing Chronic Care Patients	TS Course	8.0

2021 Annual Report Mukwonago Fire Department

EMS Mechanics of Breathing	TS Course	8.0
EMS Musculoskeletal Injuries Advanced	TS Course	16.0
EMS Non-Traumatic Chest Pain	TS Course	9.0
EMS Obstetrical Emergencies Advanced (2 hour)	TS Course	2.0
EMS Obstetrical Emergencies Basic	TS Course	6.0
EMS Operating an AED	TS Course	1.0
EMS Opioid Overdose & Naloxone Administration	TS Course	9.0
EMS Pain Management (Advanced)	TS Course	9.0
EMS Patient Assessment Basic	TS Course	8.0
EMS Pediatric Assessment	TS Course	6.0
EMS Pediatric Cardiac Arrest Advanced	TS Course	2.0
EMS Pediatric Respiratory Emergencies: Upper Airway for the EMT	TS Course	5.0
EMS Pharmacology & Drug Administration	TS Course	7.0
EMS Pharmacology Advanced	TS Course	18.0
EMS Pharmacology Basic	TS Course	6.0
EMS Pharmacology Special Considerations	TS Course	7.0
EMS Prehospital Pulmonary Embolism Care	TS Course	10.0
EMS Respiratory Emergencies Advanced	TS Course	8.0
EMS Respiratory Emergencies Basic	TS Course	1.0
EMS Respiratory System A&P Review	TS Course	14.0
EMS Safe Transportation of the Pediatric Patient	TS Course	5.0
EMS Shock and Shock Management	TS Course	7.0
EMS Stroke Assessment & Treatment	TS Course	13.0
EMS Suctioning the Patient Airway	TS Course	9.0
EMS Sudden Infant Death Syndrome (SIDS)	TS Course	9.0
EMS Supplemental Oxygen	TS Course	9.0
EMS The Human Body Part 1: Critical Systems	TS Course	10.0
EMS The Human Body Part 2: Other Systems	TS Course	10.0
EMS Tracheostomies Advanced	TS Course	14.0
EMS Traumatic Injury During Pregnancy	TS Course	13.0
EMS Understanding the Basics of ECGs	TS Course	1.0
EMS Weapons of Mass Destruction - An Intro to WMD Agents	TS Course	7.0
Equipment and Apparatus Review	Probationary Checkoff	22.0
Evaluations	Administrative/Fire Meetings	11.5
Event Stand by	EMS	62.0
Facilities Training Documentation	Facilities Training	1.0
File Center	Check it/Target Solutions	14.0
Final Probation Check off	Probationary Checkoff	4.0
Fire Department Study	Administrative/Fire Meetings	7.5
Fire Inspections	Administrative/Fire Meetings	2.0
Fire Orientation	Orientation	231.0
Firefighter Fitness, NFPA 1500	Daily Activities, NFPA 1500	21.5
Gas meters	Orientation	18.0

2021 Annual Report Mukwonago Fire Department

I Gel	Orientation	3.0
Ice Rescue	Ice Rescue/Water Rescue	45.0
Image trend Video	EMS	12.0
Importing 12-lead to Image Trend to the Cloud	EMS	2.6
Instructor Training Prep	Instructor Prep	24.0
Initial Crew Sense Training	Check it/Target Solutions	0.8
Joint Meeting	Administrative/Fire Meetings	3.3
K-Saw	Orientation	4.0
Lifepak 15	Orientation	1.0
Lucas	Orientation	3.5
MABAS Meeting	Administrative/Fire Meetings	25.5
Mental Health	EMS	9.0
Month 1 Area and Ambulance Familiarization	Probationary Checkoff	3.0
Month 10 - Ground Ladders	Probationary Checkoff	4.0
Month 2 Image trend, Intergraph, 3488	Probationary Checkoff	6.0
Month 3- 3461 Familiarization	Probationary Checkoff	2.0
Month 4 - 3462 Familiarization	Probationary Checkoff	1.0
Month 5- SCBA and Grass rigs	Probationary Checkoff	5.0
Month 8 - Aerial Operations	Probationary Checkoff	12.5
Month 9 - Boat operations/water rescue	Probationary Checkoff	3.0
Monthly ALS Training	EMS	180.0
Monthly Checkoff	Probationary Checkoff	6.0
Monthly Department Meeting	Administrative/Fire Meetings	72.0
MSA G1 SCBA Bluetooth Pairing	Fire	11.0
National Night Out Meeting	Administrative/Fire Meetings	1.0
New Driver, Drive on Roadway, NFPA 1002, 4.3	New Driver/Operator Training, NFPA 1002	4.0
New employee Orientation	Orientation	34.0
New Extrication Tools	Extrication	17.0
New Preplan	Pre-Fire Planning Inspections, NFPA 1620	4.0
Officer Development/Training	Officer Training NFPA 1021	7.0
Officer Meeting	Administrative/Fire Meetings	105.5
Oxygen and IV bag set up	Orientation	1.5
PALS Recert	EMS	64.0
Parade Detail	Fire	61.5
Ped Transport system for cot (ACR)	Orientation	1.0
Policy/SOG Meeting	Administrative/Fire Meetings	3.0
Pre-Construction	Administrative/Fire Meetings	1.3
Protective Services Committee	Administrative/Fire Meetings	2.3
Public Education NFPA standards	Administrative/Fire Meetings	10.0
Public Relations/Education	Fire	167.3
Pumper 02 Apparatus Inspection and Maintenance	Driver/Operator Training, NFPA 1002	21.5
Pumper 03 Apparatus Safety and Operating Emergency Vehicles	Driver/Operator Training, NFPA 1002	6.0
Pumper 12 Relay Pumping Operations	Driver/Operator Training, NFPA 1002	9.0

2021 Annual Report Mukwonago Fire Department

RDC Training	Ice Rescue/Water Rescue	15.0
Recruit Testing	Administrative/Fire Meetings	59.0
Safety Committee	Administrative/Fire Meetings	1.0
Sawzall (reciprocating saw)	Orientation	3.0
Special Event	Administrative/Fire Meetings	10.8
Splints	Orientation	2.5
Stair Chair/Cot/Power load	Orientation	1.0
Tickets	Check it/Target Solutions	17.0
Town Board Meeting	Administrative/Fire Meetings	2.5
Training Committee	Administrative/Fire Meetings	15.5
Triple Layer	Orientation	10.0
Tylenol	EMS	16.0
Village Board Meeting	Administrative/Fire Meetings	11.3
Village Committee of the Whole Meeting	Administrative/Fire Meetings	3.5
Village Development Meeting	Administrative/Fire Meetings	11.0
Water Rescue Training	Ice Rescue/Water Rescue	49.0
Waukesha Fire Chief's Assoc	Administrative/Fire Meetings	11.3
WCC Transition	Radio Training	4.5
Weekly Training Activity	Daily Activities, NFPA 1500	6.0
Weekly/Monthly Preventative Maintenance, NFPA 1002 4.2	Daily Activities, NFPA 1500	114.5

Total		3223.4
--------------	--	---------------

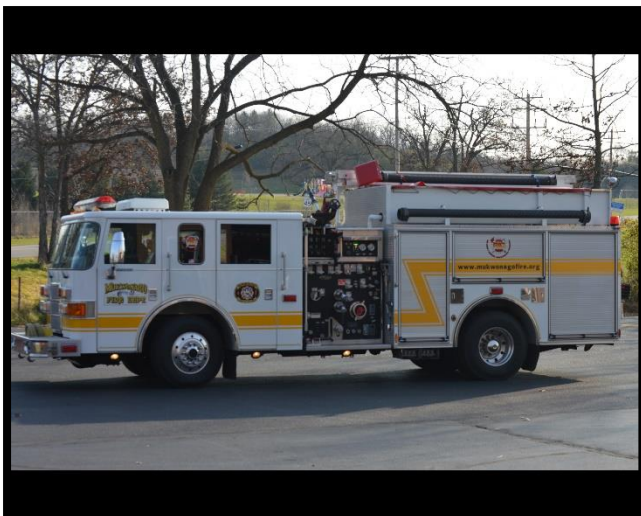
The above chart indicates all the hours of trainings, meetings, and personal development MFD members attend throughout the last year. Emergency services are very demanding, and continuous training is required to keep up with ever changing challenges members will encounter. A total of 3,223.4 hours of training completed for 2021. Average of 75 hours / employee.

Engines



Vehicle: 3461 – Rosenbauer Commander Pumper-Tender
Year Purchased: 2021
Approximate Cost: \$ 740,000
Replacement Year: 2046
Replacement Cost: \$1,500,000

Vehicle: 3462 – 2002 Pierce Enforcer
Year Purchased: 2002
Approximate Cost: \$ 285,000
Replacement Year: 2026
Replacement Cost: \$ 850,000 (Pumper-Tender)



Vehicle: 3463 – 2001 Pierce Enforcer Rescue Style Pumper
Year Purchased: 2008
Approximate Cost: \$ 198,000
Replacement Year: 2026
Replacement Cost: \$ Sell unit to downsize fleet

Aerial Apparatus

Vehicle: 3471 – Rosenbauer Cobra 101'
Year Purchased: 2013
Approximate Cost: \$ 775,000
Replacement Year: 2038
Replacement Cost: \$ 1,500,000



Specialty Apparatus



Vehicle: 3482 – Ford F350
Year Purchased: 2016
Approximate Cost: \$ 37,819
Replacement Year: 2031
Replacement Cost: \$ 66,000

Vehicle: 3484 – 2008 6x6 and Trailer
Year Purchased: 2014
Approximate Cost: \$ 6,695
Replacement Year: 2022
Replacement Cost: \$ 40,000



Water Operations (Ice and open water)



Vehicle: 3496 – 1998 Rescue One
Year Purchased: 1997
Approximate Cost: \$ 13,000
Replacement Year: 2024
Replacement Cost: \$50,000

Personnel Vehicles



Vehicle: 3481 – Chevrolet Silverado 3500
Year Purchased: 2020
Approximate Cost: \$ 50,000
Replacement Year: 2032
Replacement Cost: \$65,000

Vehicle: 3488 – Chevrolet Tahoe
Year Purchased: 2015
Approximate Cost: \$45,000
Replacement Year: 2022
Replacement Cost: \$60,000





Vehicle: Car 1- 2015 Ford Interceptor
Year Purchased: 2014
Approximate Cost: \$30,000
Replacement Year: 2023
Replacement Cost: \$60,000

Ambulances

Vehicle: 3451 – 2016 Med Tec Ford E-450 Remount
Year Purchased: 2016
Approximate Cost: \$ 142,000
Replacement Year: 2022
Replacement Cost: \$ 280,000 with cot



Vehicle: 3452 – 2017 Horton E-450
Year Purchased: 2017
Approximate Cost: \$ 196,000
Replacement Year: 2025
Replacement Cost: \$ 306,000 with Power load and cot

2021 Annual Report Mukwonago Fire Department

Vehicle: 3453 – 2019 Med Tec Ford E-450 Remount
Year Purchased: 20
Approximate Cost: \$ 116,691
Replacement Year: 2027
Replacement Cost: \$ 325,000 with Power load and cot

