



Mukwonago Fire Department Annual Report 2022

www.mukwonagofire.org

Table of Contents

Mission Statement	3
Vision Statement.....	3
Core Values	4
Chief’s Report.....	5
Role of Mukwonago Fire Department Personnel	6
Executive Summary.....	9
Total Number of Incidents/Ave. Number of Responders	9
Fire/ EMS Incidents by District.....	10
Fire/ EMS Mutual Aid Given and Received	11
Fire/ EMS Incident Type	12
Fire/ EMS Incidents Alarm Time Analysis.....	13
Fire/ EMS Incidents by the Day of the Week	14
Emergency Medical Services.....	15
EMS Runs by City.....	15
EMS Calls by Time of Day	16
Primary Role of Ambulance	17
EMS Calls by Destination.....	18
EMS Inter-Facility Transfers	19
Provider Primary Impression	20
2022 CPR Report	23
2022 CPR Expense Report.....	24
Fire/EMS Trainings 2022	25
Engines	31
Aerial Apparatus	32
Specialty Apparatus	32
Water Operations	33
Personnel Vehicles	33
Ambulances.....	34



Mission Statement

It is the mission of the Mukwonago Fire Department to provide a range of programs designed to protect the lives and property of the inhabitants of the Village and Town of Mukwonago from the adverse effects of fire, sudden medical emergencies or exposure to any dangerous condition created by either man or nature.

Vision Statement

The Mukwonago Fire Department will continually strive to exceed our citizen's expectations working within a healthy, safe, and innovative environment that enhances the professional and efficient delivery of emergency services. We also strive to be an organization providing community safety education and information keen to anticipate, influence and embrace change.

Core Values

Integrity – openness, honesty, loyalty, and honor; leading through example to achieve a common goal by actions.

Professional Development – commitment to continually expand the abilities of personnel, encourage continuous education and advancement opportunities as becoming officers.

Accountability – all personnel, management and otherwise providing a level of accountability to each other and the community and the implementation of responsible measuring.

Teamwork – develop and maintain a sense of family camaraderie and loyalty to one another and to the community; provide a sense of help and encouragement for all and by all.

Innovation – progressive, pro-active, modern, open, and creative; open and receptive to all input and feedback

Chief's Report

I appreciate you taking the time to see who we are and what we do. Should you have further questions or are interested in joining this organization you can contact us. We are always looking for additional highly motivated and team-oriented people to join our staff.

I am excited to announce we were able to hold our annual Fire Prevention Week Open house. It was a great success, large public turnout and beautiful weather and fun had by all.

2022 Mukwonago FD continued dispatching services with Waukesha County Communications Center (WCCC). WCCC provides for immediate pre-alerting incidents, followed up with coded emergencies. WCCC provides for a dedicated Fire Dispatcher, auto aid and predetermined response plans. MFD total call volume reached 2115 calls for 2022. MFD responded to 12 less EMS calls, 274 less inter-facility transports and 24 more Fire requests, overall, 11% decrease in call volume. PHC Hospital- Mukwonago opened their floors beds to take extended care patients.

Mukwonago Fire Department took delivery of a new Horton Ambulance, John Deere UTV and trailer. The ambulance is on a truck chassis and comes with a liquid crystal ride system to provide better comfort in the transport of patients.

The department consists of Paid on Call (POC), Paid on Premise (POP) and 7 full-time staff, including the Fire Chief. There are two POP staff from 6am to 6pm Monday through Friday and two POP 0800-1800hrs and one POP 0600-1800hrs on the weekends. POC staff 6pm to 6am seven days a week on a rotating schedule. POC membership is declining nationally and MFD is not immune to this trend. The shortage of available trained individuals', and recruitment of POC/POP staff is becoming an increasing challenge. **In 2022 75.12% of the available POP shifts were filled. 2,484 hours were not filled, equating to 207- 12 hour shifts for the year the department was short staffed.** As we examine our operations, we have taken an emphasis on transitional firefighting, predicting fire flow, working with minimal staffing models. Several departments continue to hire full-time staff and we saw several staff be hired full-time in other departments. The part-time model is becoming increasingly outdated and unreliable.

The 2019 Mukwonago Fire Department Study examined administration, staffing, operations, future growth, and needs. Respective Boards agreed to go to referendum June/July 2022 and in November 2022 the residents of the Village and Town of Mukwonago voted in favor to hire 6 additional full-time staff (3- Firefighter/Paramedics, 3- Firefighter/ EMT-Basics). This was a historic opportunity for the Mukwonago Fire Department. We posted applications internally and then externally for candidates. We hope to fill all the positions by June 2023. This is a step in the right direction with much more work to do. Competition with other agencies for full-time staff is very competitive.

Everyone is welcome at any time to stop in, meet your firefighters, and look at your apparatus. As well as responding to calls, members have spent numerous hours in training and education to keep their skills at top levels. Enjoy the following more detailed information in the following pages.

Sincerely,
Jeffrey R. Stien

Fire Chief

Role of Mukwonago Fire Department Personnel

Save life, Protect Property, Render Assistance... IN ADDITION...

The role of today's fire department personnel is quite different from that of years past. The fire service is constantly changing to meet the needs of the community under ever changing times.

Mukwonago Fire Department Personnel need to possess certain attributes to be successful in the role of Firefighter/EMT's: commitment, dedication, integrity, confidence, resilience, adaptability, effective communication skills.

A common image of the firefighter is that of fighting fires. The reality is this is a small fraction of the role. Personnel are cross trained in firefighting and EMS skills. This is effective utilization of the limited number of personnel on the Mukwonago Fire Department. Fire and EMS personnel function in a multi-faceted role within these common areas:

Prevention

Bi-annual inspections and education activities that prevent fire, aid in rapid extinguishment, or limiting the loss of life and property.

- Business, school, residential facility, and home safety inspections
- Education presentations in daycare facilities and schools
- Facility tours
- Open house and other public relations activities to enhance the public's perception of the Mukwonago Fire Department.
- Maintain excellent working relationships with other local departments such as Police and Department of Public Works.

Preparation

Maintaining all aspects of the Mukwonago Fire Department and its Personnel in a state of readiness.

- Routine apparatus and equipment check – observing and checking for needed repairs, replacement, expirations and deficiencies
- Cleaning – apparatus and equipment will last longer and function more effectively. Station cleaning is also important

in preparation should the need to open our doors for displaced members of the community.

- Personnel ensuring their own fitness levels are such that they are prepared for the physically and mentally demanding work.
- In house training monthly for EMT's, Paramedics, Fire Department, Duty Company, and Dive Team.
- External training at WCTC, Gateway Technical College, seminars, or other experiential opportunities to further the knowledge of Mukwonago Fire Department Personnel and to stay current with ever changing technologies.
- Perform administration duties related to records and documentation, thus promoting an overall efficient operation of the Mukwonago Fire Department.

Protection

Programs in place to protect Mukwonago Fire Department Personnel and the community in the event of an emergency.

- Vaccinations against influenza, scheduled personal protective equipment inspections and routine cleaning.
- Annual SCBA flow and fit tests
- Annual apparatus pump testing, ladder testing and hose testing
- Fire Code and ordinance enforcement.
- New turnout gear with Cancer barrier

Response

Putting necessary items into place to expedite the response of Mukwonago Fire Department in the event of an emergency, and safely mitigate any incident.

- Driver training and education regarding safe and prompt responses.
- Familiarizing all personnel with the Mukwonago community.
- Familiarizing personnel in the use of GPS units in all apparatus.
- Being prepared for incidents that not only involve fire and medical emergencies but also:
 - Motor vehicle accidents
 - Hazardous materials leaks
 - Railroad incidents
 - Water and Ice emergencies
 - Natural disasters
 - Any other response for which requested.
- Operate apparatus such as engines, aerial devices, water tenders, trailers, ambulances, and support vehicles within the vehicle's design parameters so that the apparatus is used safely and effectively.

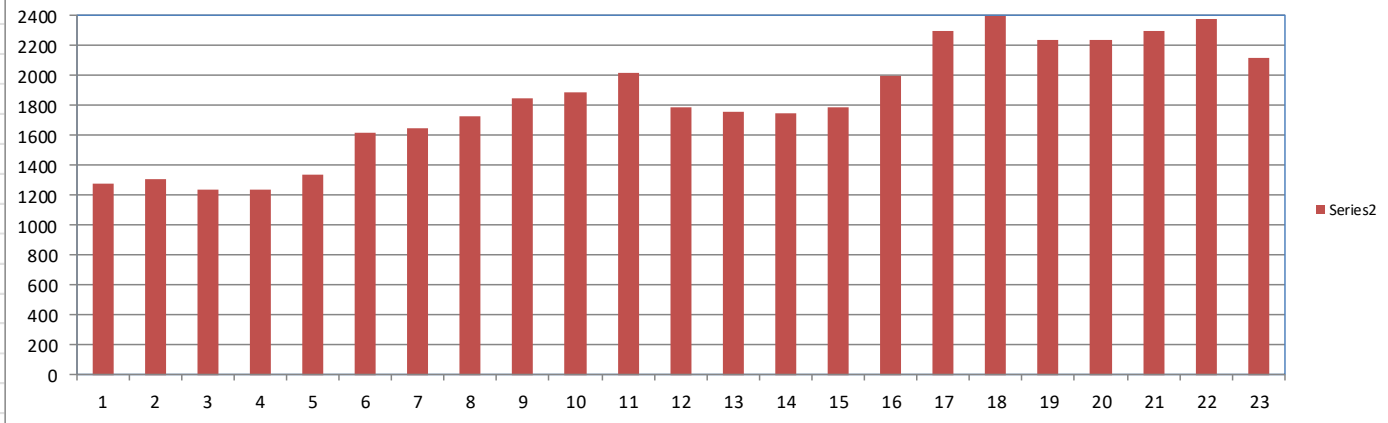
- Responsible for all firefighting duties involved in the incident necessary to save lives and property, combat, extinguish and/or prevent fires
- Effectively perform these duties as required under emergency conditions frequently involving considerable hazards.
- Provide medical assistance and administer medical procedures to stabilize a patient's condition and prepare them for transport to medical care facilities.
- Safely perform rescue operations for the victim and rescue personnel.

Executive Summary

Number of Annual Fire and EMS Calls Per Year

Year	Total	Total % Change	EMS	EMS % Change	Transfers	Transfer % Change	Fire	Fire % Change
2000	1277	0.0			0			
2001	1312	2.7			0	0.0		
2002	1239	-5.6			0	0.0		
2003	1241	0.2			0	0.0		
2004	1342	8.1			0	0.0		
2005	1615	20.3			0	0.0		
2006	1646	1.9	1361		0	0.0	285	
2007	1730	5.1	1426	4.8	0	0.0	304	6.7
2008	1845	6.6	1537	7.8	0	0.0	308	1.3
2009	1883	2.1	1625	5.7	0	0.0	258	-16.2
2010	2015	7.0	1694	4.2	0	0.0	321	24.4
2011	1791	-11.1	1563	-7.7	0	0.0	228	-29.0
2012	1756	-2.0	1508	-3.5	0	0.0	248	8.8
2013	1745	-0.6	1497	-0.7	0	0.0	248	0.0
2014	1784	2.2	1531	2.3	0	0.0	253	2.0
2015	1998	12.0	1357	-11.4	362	0.0	279	10.3
2016	2298	15.0	1206	-11.1	814	124.9	278	-0.4
2017	2399	4.4	1246	3.3	871	7.0	282	1.4
2018	2241	-6.6	1218	-2.2	776	-10.9	247	-12.4
2019	2234	-0.3	1241	1.9	729	-6.1	264	6.9
2020	2302	3.0	1282	3.3	781	7.1	239	-9.5
2021	2377	3.3	1327	3.5	768	-1.7	282	18.0
2022	2115	-11.0	1315	-0.9	494	-35.7	306	8.5
% Inc.	65.62							

Inter-Facilities 07-06-15



Total Number of Incidents/Ave. Number of Responders

Agency Name	Total Number of Incidents	Total Number of Responders	Average
Mukwonago Fire Department	2,115	6,217	2.9

Fire/ EMS Incidents by District

Basic Incident Zone/District	Number of Incidents
NA	28
Big Bend	22
East Troy Fire / EMS	182
Elkhorn FD	5
Hartland	1
Kettle Moraine Fire District	81
Lake Country	5
Menomonee Falls	1
MUF01- Village	890
MUF02- Village	559
MUF03- Town	92
MUF04- Town	130
MUF05- Town	81
Other	5
Palmyra	1
Pewaukee	1
Tess Corners	1
Vernon	9
Waterford	2
C- WFD	1
Western Lakes FD	10
Village of Waukesha	8
Total	2115

Fire/ EMS Mutual Aid Given and Received

Mutual Aid Given			Mutual Aid Received	
FDID	Basic Incident Type Code And Description	Number of Incidents	Basic Incident Type Code And Description	Number of Incidents
51030	111 - Building fire	1	111 - Building fire	3
51110	111 - Building fire	1	114 - Chimney or flue fire, confined to chimney or flue	2
51110	571 - Cover assignment, standby, moveup	1	140 - Natural vegetation fire, other	1
64040	111 - Building fire	1	161 - Outside storage fire	1
64090	111 - Building fire	1	311 - Medical assist, assist EMS crew	18
64090	381 - Rescue or EMS standby	1	321 - EMS call, excluding vehicle accident with injury	5
64090	571 - Cover assignment, standby, moveup	1	322 - Motor vehicle accident with injuries	9
64120	3213 - Intercept	2	324 - Motor vehicle accident with no injuries.	2
64130	111 - Building fire	1	553 - Public service	1
64130	321 - EMS call, excluding vehicle accident with injury	3	571 - Cover assignment, standby, moveup	1
64130	3212 - Interfacility Transfer	1	611 - Dispatched and cancelled en route	1
64130	3213 - Intercept	165	733 - Smoke detector activation due to malfunction	1
67080	321 - EMS call, excluding vehicle accident with injury	2	736 - CO detector activation due to malfunction	1
67080	3213 - Intercept	1	Total	46
67080	322 - Motor vehicle accident with injuries	1		
67080	324 - Motor vehicle accident with no injuries.	1		
67080	651 - Smoke scare, odor of smoke	1		
67130	111 - Building fire	1		
67130	361 - Swimming/recreational water areas rescue	1		
67130	571 - Cover assignment, standby, moveup	2		
67140	3213 - Intercept	8		
67150	571 - Cover assignment, standby, moveup	1		
67210	111 - Building fire	1		
67210	321 - EMS call, excluding vehicle accident with injury	1		
67210	322 - Motor vehicle accident with injuries	1		
67230	3213 - Intercept	1		
67270	111 - Building fire	1		
67340	111 - Building fire	2		
67340	743 - Smoke detector activation, no fire - unintentional	1		
67360	3213 - Intercept	17		
67370	111 - Building fire	2		
67370	143 - Grass fire	1		
67370	321 - EMS call, excluding vehicle accident with injury	2		
67370	3213 - Intercept	41		
67370	412 - Gas leak (natural gas or LPG)	1		
67370	611 - Dispatched and cancelled en route	1		
	Total	271		

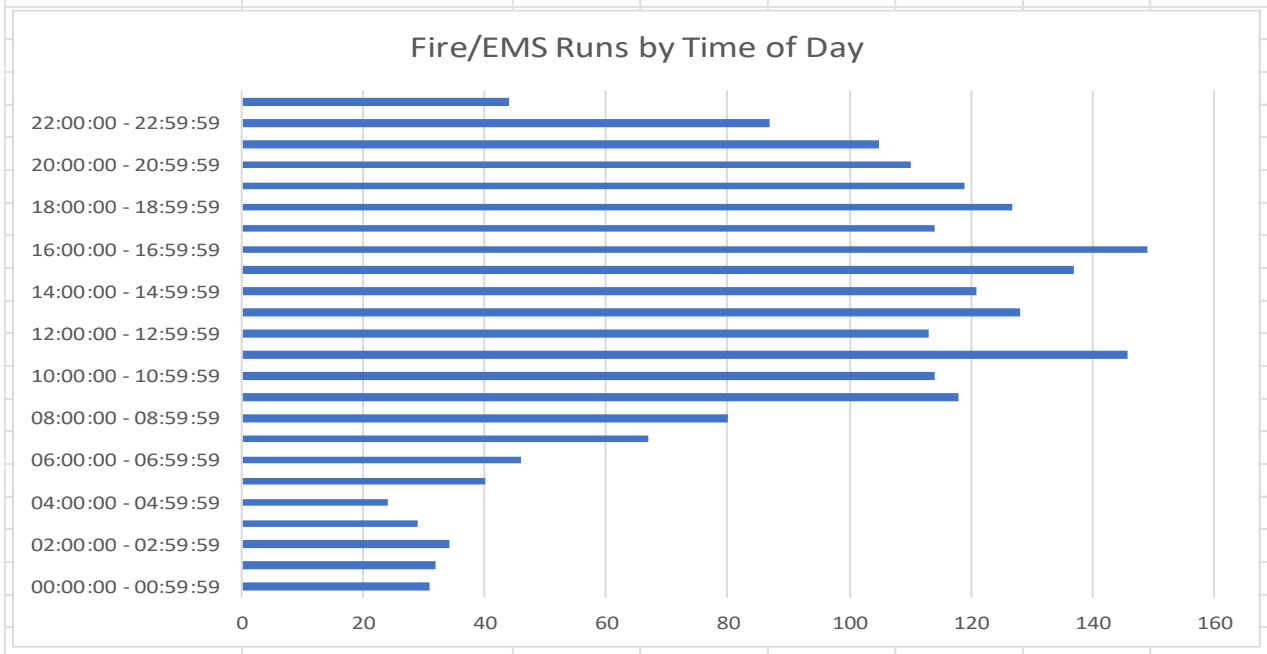
Mutual aid requests are made when additional resources or staffing are needed. Exceeding the current resources or when there is no staffing to handle the call due to being on multiple or other calls. Mukwonago FD is part of MABAS Division 106. The mutual aid requests listed above include both fire and EMS.

Fire/ EMS Incident Type

Incident Type	Basic Incident Type Code And Description	Incidents	Percent	Prop Loss	Cont Loss	Total Loss	Loss Percent
1 - Fire	111 - Building fire	18	0.85%	370,000	56,000	426,000	93.73%
1 - Fire	114 - Chimney or flue fire, confined to chimney or flue	3	0.14%	5,000	0	5,000	1.10%
1 - Fire	131 - Passenger vehicle fire	1	0.05%	15,000	0	15,000	3.30%
1 - Fire	138 - Off-road vehicle or heavy equipment fire	2	0.09%	8,000	0	8,000	1.76%
1 - Fire	140 - Natural vegetation fire, other	1	0.05%	0	0	0	0%
1 - Fire	143 - Grass fire	5	0.24%				
1 - Fire	161 - Outside storage fire	2	0.09%	500	0	500	0.11%
2 - Overpressure Rupture, Explosion, Overheat (No Fire)	251 - Excessive heat, scorch burns with no ignition	1	0.05%				
3 - Rescue & Emergency Medical Service Incident	311 - Medical assist, assist EMS crew	22	1.04%				
3 - Rescue & Emergency Medical Service Incident	321 - EMS call, excluding vehicle accident with injury	900	42.55%				
3 - Rescue & Emergency Medical Service Incident	3212 - Interfacility Transfer	529	25.01%				
3 - Rescue & Emergency Medical Service Incident	3213 - Intercept	237	11.21%				
3 - Rescue & Emergency Medical Service Incident	322 - Motor vehicle accident with injuries	36	1.70%				
3 - Rescue & Emergency Medical Service Incident	324 - Motor vehicle accident with no injuries.	29	1.37%				
3 - Rescue & Emergency Medical Service Incident	361 - Swimming/recreational water areas rescue	1	0.05%				
3 - Rescue & Emergency Medical Service Incident	381 - Rescue or EMS standby	4	0.19%				
4 - Hazardous Condition (No Fire)	400 - Hazardous condition, other	1	0.05%				
4 - Hazardous Condition (No Fire)	411 - Gasoline or other flammable liquid spill	2	0.09%				
4 - Hazardous Condition (No Fire)	412 - Gas leak (natural gas or LPG)	8	0.38%				
4 - Hazardous Condition (No Fire)	413 - Oil or other combustible liquid spill	1	0.05%				
4 - Hazardous Condition (No Fire)	440 - Electrical wiring/equipment problem, other	1	0.05%				
4 - Hazardous Condition (No Fire)	444 - Power line down	7	0.33%				
4 - Hazardous Condition (No Fire)	463 - Vehicle accident, general cleanup	1	0.05%				
5 - Service Call	500 - Service call, other	14	0.66%				
5 - Service Call	511 - Lock-out	2	0.09%				
5 - Service Call	522 - Water or steam leak	5	0.24%				
5 - Service Call	531 - Smoke or odor removal	2	0.09%				
5 - Service Call	542 - Animal rescue	1	0.05%				
5 - Service Call	551 - Assist police or other governmental agency	6	0.28%				
5 - Service Call	553 - Public service	2	0.09%				
5 - Service Call	561 - Unauthorized burning	1	0.05%	0	0	0	0%
5 - Service Call	571 - Cover assignment, standby, moveup	11	0.52%				
6 - Good Intent Call	611 - Dispatched and cancelled en route	152	7.19%				
6 - Good Intent Call	622 - No incident found on arrival at dispatch address	12	0.57%				
6 - Good Intent Call	631 - Authorized controlled burning	4	0.19%				
6 - Good Intent Call	651 - Smoke scare, odor of smoke	4	0.19%				
6 - Good Intent Call	671 - HazMat release investigation w/no HazMat	10	0.47%				
7 - False Alarm & False Call	700 - False alarm or false call, other	2	0.09%				
7 - False Alarm & False Call	731 - Sprinkler activation due to malfunction	2	0.09%				
7 - False Alarm & False Call	733 - Smoke detector activation due to malfunction	14	0.66%				
7 - False Alarm & False Call	734 - Heat detector activation due to malfunction	3	0.14%				
7 - False Alarm & False Call	735 - Alarm system sounded due to malfunction	11	0.52%				
7 - False Alarm & False Call	736 - CO detector activation due to malfunction	8	0.38%				
7 - False Alarm & False Call	740 - Unintentional transmission of alarm, other	1	0.05%				
7 - False Alarm & False Call	741 - Sprinkler activation, no fire - unintentional	3	0.14%				
7 - False Alarm & False Call	743 - Smoke detector activation, no fire - unintentional	5	0.24%				
7 - False Alarm & False Call	744 - Detector activation, no fire - unintentional	3	0.14%				
7 - False Alarm & False Call	745 - Alarm system activation, no fire - unintentional	24	1.13%				
7 - False Alarm & False Call	746 - Carbon monoxide detector activation, no CO	1	0.05%				
Total		2115	1	398500	56000	454500	1

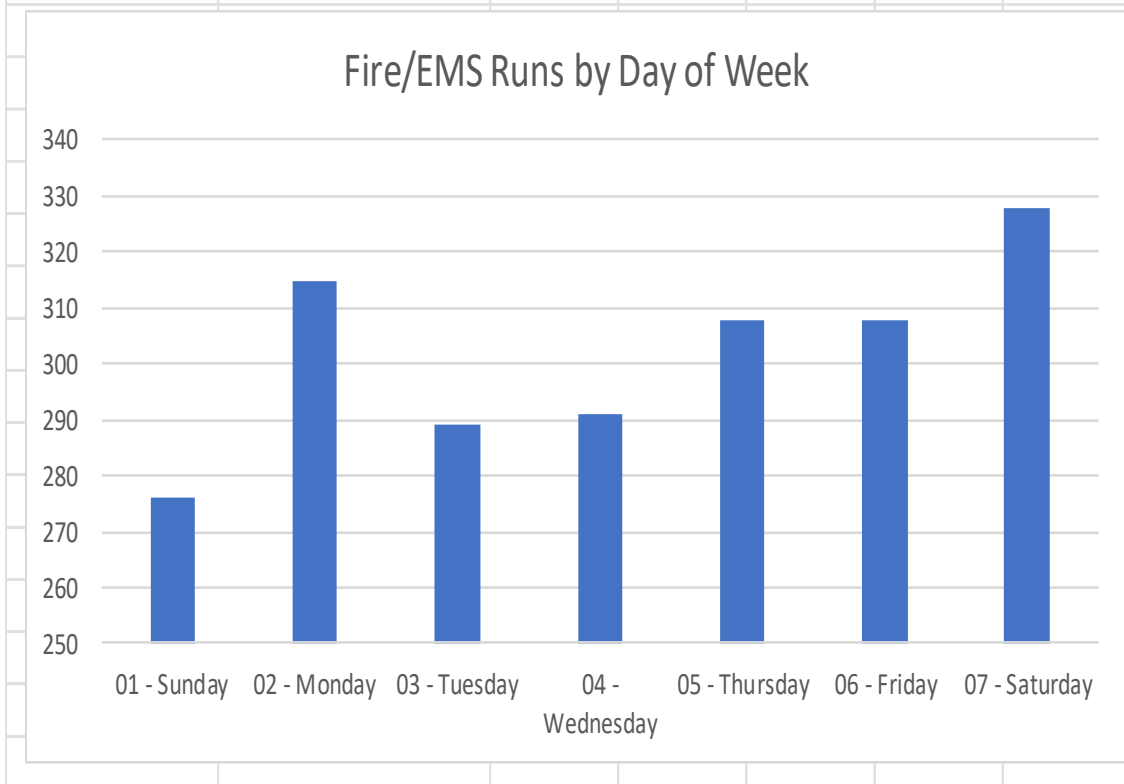
Fire/ EMS Incidents Alarm Time Analysis

Hour of Day	Number of Incidents
00:00:00 - 00:59:59	31
01:00:00 - 01:59:59	32
02:00:00 - 02:59:59	34
03:00:00 - 03:59:59	29
04:00:00 - 04:59:59	24
05:00:00 - 05:59:59	40
06:00:00 - 06:59:59	46
07:00:00 - 07:59:59	67
08:00:00 - 08:59:59	80
09:00:00 - 09:59:59	118
10:00:00 - 10:59:59	114
11:00:00 - 11:59:59	146
12:00:00 - 12:59:59	113
13:00:00 - 13:59:59	128
14:00:00 - 14:59:59	121
15:00:00 - 15:59:59	137
16:00:00 - 16:59:59	149
17:00:00 - 17:59:59	114
18:00:00 - 18:59:59	127
19:00:00 - 19:59:59	119
20:00:00 - 20:59:59	110
21:00:00 - 21:59:59	105
22:00:00 - 22:59:59	87
23:00:00 - 23:59:59	44
Total	2115



Fire/ EMS Incidents by the Day of the Week

Day of Week	Number of Incidents				
01 - Sunday	276				
02 - Monday	315				
03 - Tuesday	289				
04 - Wednesday	291				
05 - Thursday	308				
06 - Friday	308				
07 - Saturday	328				
Total	2115				



Emergency Medical Services

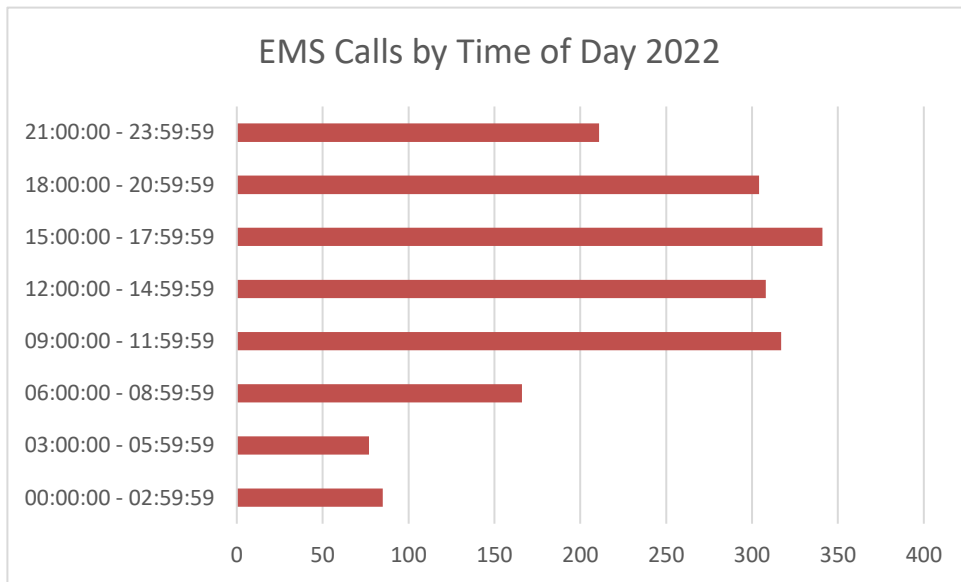


EMS Runs by City

EMS Incident by City Name	Number of Runs	Percent of Total Runs
Village of Mukwonago	1,273	70.37%
Town of Mukwonago	248	13.71%
East Troy	152	6.91%
North Prairie	29	1.60%
Eagle	45	1.33%
	19	1.05%
Village of Big Bend	19	1.05%
Village of Vernon	7	0.39%
LAFT_T	6	0.33%
TROY_T	6	0.33%
SPRP_T	2	0.11%
Town of Genesee	2	0.11%
Village of Dousman	1	0.06%
Total	1,809	1

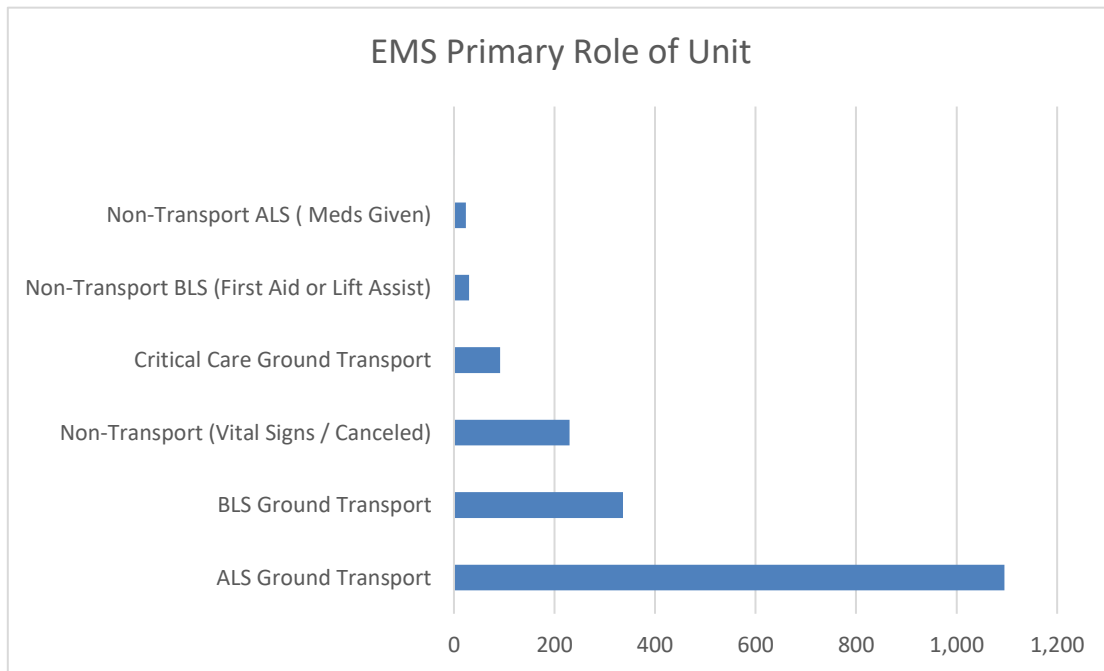
EMS Calls by Time of Day

Time of Day	EMS Incidents
00:00:00 - 02:59:59	85
03:00:00 - 05:59:59	77
06:00:00 - 08:59:59	166
09:00:00 - 11:59:59	317
12:00:00 - 14:59:59	308
15:00:00 - 17:59:59	341
18:00:00 - 20:59:59	304
21:00:00 - 23:59:59	211
Total	1809



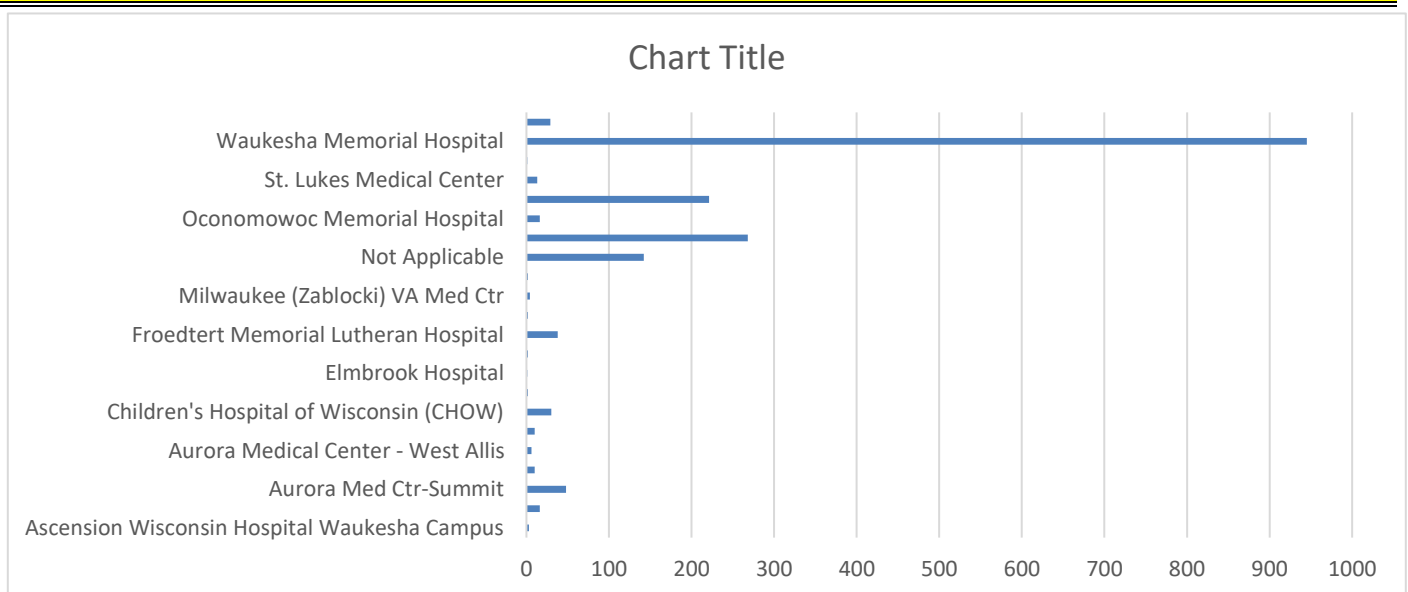
Primary Role of Ambulance

Response Primary Role Of Unit	Number of Runs	Percent of Total Runs
ALS Ground Transport	1,095	60.53%
BLS Ground Transport	336	18.57%
Non-Transport (Vital Signs / Canceled)	230	12.71%
Critical Care Ground Transport	92	5.09%
Non-Transport BLS (First Aid or Lift Assist)	30	1.66%
Non-Transport ALS (Meds Given)	24	1.33%
	2	0.11%
Total	1,809	100%



EMS Calls by Destination

Disposition Destination Name	Destination Code	Number of Runs	Percent of Total Runs	
Ascension Wisconsin Hospital Waukesha Campus		333	3	0.17%
Aurora Lakeland Medical Center		132	16	0.88%
Aurora Med Ctr-Summit		316	48	2.65%
Aurora Medical Center - Summit		316	10	0.55%
Aurora Medical Center - West Allis		149	6	0.33%
Aurora Mem Hosp of Burlington		14	10	0.55%
Children's Hospital of Wisconsin (CHOW)		135	30	1.66%
Columbia St Mary's - Milwaukee		53	2	0.11%
Elmbrook Hospital		262	1	0.06%
Elmbrook Memorial Hospital		183	2	0.11%
Froedtert Memorial Lutheran Hospital		232	38	2.10%
Mercy Walworth Hospital And Medical Center		6023	2	0.11%
Milwaukee (Zablocki) VA Med Ctr	125503		4	0.22%
Mooreland Reserve- New Berlin		327	2	0.11%
Not Applicable			142	7.85%
Not Transported	6024		268	14.82%
Oconomowoc Memorial Hospital		113	16	0.88%
Prohealth Waukesha Memorial Hosp-Mukwonago		337	221	12.22%
St. Lukes Medical Center		160	13	0.72%
VA Milwaukee (Clement J Zablocki Veterans Affairs)	125503		1	0.06%
Waukesha Memorial Hospital		41	945	52.24%
Waukesha Memorial Outpatient Center		42	29	1.60%
Total			1809	100%



EMS Inter-Facility Transfers

	2015	2016		2017		2018		2019		2020		2021		2022	
		Admissions	Transfers	Admissions	Transfers	Admissions	Transfers	Admissions	Transfers	Admissions	Transfers	Admissions	Transfers	Admissions	Transfers
January	None	103	6	113	13	106	10	94	8	100	13	102	10	108	13
February	None	71	10	80	6	78	8	100	12	112	12	96	5	67	4
March	None	96	10	82	13	90	9	98	9	97	9	110	7	74	5
April	None	83	5	106	12	100	14	115	17	88	9	107	3	72	4
May	None	95	15	84	9	96	8	118	19	92	4	101	9	91	1
June	None	86	8	70	15	93	5	99	10	114	9	109	8	83	4
July	95	80	4	90	8	116	12	84	19	121	5	122	7	89	5
August	121	105	6	93	9	90	10	103	6	111	6	119	8	79	6
September	100	81	11	89	10	93	8	109	10	126	8	120	9	69	8
October	90	69	14	90	11	95	9	98	10	119	5	133	7	82	7
November	93	96	4	87	10	89	10	109	13	115	10	121	17	73	18
December	92	108	9	111	13	108	15	124	17	105	12	156	20	90	9
Total	591	1073	102	1095	129	1154	118	1251	150	1300	102	1396	110	977	84
	591		1175		1224		1272		1401		1402		1506		1061
% Increase					4.17		3.92		10.14		0.07		7.42		-29.55
MFD Transports	362		814		871		776		729		781		768		494
MFD % Taken	61.25		69.28		71.16		61.01		52.03		55.71		51.00		46.56

ProHealth Care (PHC) provided the number of admission (PHC to PHC facility) and transfer (PHC to other than PHC facility) requests related to the Mukwonago ER. The total numbers include any inter-facility transport request. This includes other than a ProHealth Care facility. The percentage transported by Mukwonago FD declined in 2018 and 2019. This is direct result of freezing a Paid-on Premise (POP) position, meaning it was not opened to be filled due to budgetary restraints. Other causes include available staffing for POP were lower due to several staff being hired full time to other fire departments and hiring pool has declined. In 2022 the hospital beds were opened, and patients were being on extended observation on a floor.

Provider Primary Impression

Situation Provider Primary Impression	Number of Runs	Percent of Total Runs
	179	9.89%
History of falling (Z91.81)	102	5.64%
Weakness (R53.1)	100	5.53%
Acute abdomen (R10.0)	83	4.59%
Cardiac arrhythmia/dysrhythmia (I49.9)	67	3.70%
Syncope and collapse (R55)	62	3.43%
Acute pain, not elsewhere classified (G89.1)	61	3.37%
Altered mental status (R41.82)	54	2.99%
Chest pain, unspecified (R07.9)	54	2.99%
Infection (Unknown Source) (A31)	49	2.71%
Cardiac Arrest (I46.9)	39	2.16%
Generalized abdominal pain (R10.84)	38	2.10%
Back Pain (M54.9)	37	2.05%
Injury of hip (S79.91)	37	2.05%
Not Applicable	36	1.99%
Stroke (I63.9)	36	1.99%
Pneumonia, unspecified (J18.9)	31	1.71%
Respiratory distress, acute (J80)	29	1.60%
Injury of head (S09.90)	27	1.49%
GI Bleed (K29.71)	25	1.38%
COPD with exacerbation (J44.1)	24	1.33%
Overdose/Drug Ingestion (itICD.047)	24	1.33%
Behavioral / psychiatric disorder (F99)	23	1.27%
CHF (I50.9)	23	1.27%
Repeated falls (R29.6)	23	1.27%
Seizures without status epilepticus (G40.909)	23	1.27%
Dizziness and giddiness (R42)	21	1.16%
Respiratory disorder, unspecified (J98.9)	21	1.16%
Urinary Tract Infection (UTI) (N39.0)	21	1.16%
Injury of wrist, hand, or fingers (S69.9)	17	0.94%
Septicemia (1); or Sepsis (2) (A41.9)	17	0.94%
Angina (1); or Ischemic chest pain (2) (I20.9)	16	0.88%
Nausea with vomiting, unspecified (R11.2)	16	0.88%
Hypotension (I95.9)	15	0.83%
Injury of lower leg (S89.9)	15	0.83%
Nausea and vomiting (R11)	15	0.83%
Alcohol dependence with withdrawal, unspecified (F10.239)	13	0.72%
Fever (R50.9)	13	0.72%

2022 Annual Report Mukwonago Fire Department

Injury of face (S09.93)	12	0.66%
Injury of shoulder or upper arm (S49.9)	12	0.66%
Cardiac Chest Pain (STEMI) Inferior wall (I21.1)	11	0.61%
Diabetes with hypoglycemia (1); or Hypoglycemia-Diabetes (2) (E13.64)	11	0.61%
Headache (R51)	11	0.61%
Injury of ankle (S99.91)	10	0.55%
Allergic Reaction (T78.40)	9	0.50%
Influenza, unspecified (Flu) (J11)	9	0.50%
Injury of neck (S19.9)	9	0.50%
Alcohol use, unspecified (F10.9)	7	0.39%
Alcohol use, unspecified with intoxication (F10.92)	7	0.39%
Chest Pain, Other [non-cardiac] (R07.89)	7	0.39%
Injury of lower back (S39.92)	7	0.39%
Injury of thorax (upper chest) (S29.9)	7	0.39%
Anemia, unspecified (D64.9)	6	0.33%
Cardiac Chest Pain (STEMI) Anterior wall (I21.0)	6	0.33%
Choking (itICD.046)	6	0.33%
Diabetes with hyperglycemia (1); or Hyperglycemia-Diabetes (2) (E13.65)	6	0.33%
Head bleed (I62.9)	6	0.33%
Injury of thigh (upper leg) (S79.92)	6	0.33%
Pelvic and perineal pain (R10.2)	6	0.33%
Pulmonary embolism (I26)	6	0.33%
Suicide attempt (T14.91)	6	0.33%
Asthma with exacerbation (J45.901)	5	0.28%
Epistaxis (Nose Bleed) (R04.0)	5	0.28%
Hypoglycemia, unspecified (E16.2)	5	0.28%
Non-specified Sedative, hypnotic or anxiolytic related disorders (F13)	5	0.28%
Non-ST elevation (NSTEMI) myocardial infarction (I21.4)	5	0.28%
TIA (G45.9)	5	0.28%
Cancer, unspecified (D49)	4	0.22%
Diarrhea (K59.1)	4	0.22%
Hypertension (I10)	4	0.22%
Injury of forearm (S59.91)	4	0.22%
Injury, unspecified (T14.90)	4	0.22%
Pulmonary edema, acute (J81.0)	4	0.22%
Seizures with status epilepticus (G40.901)	4	0.22%
Anaphylactic shock (T78.2)	3	0.17%
Burn, unspecified location and degree (T30.0)	3	0.17%
Chronic pain, not elsewhere classified (G89.2)	3	0.17%
Dehydration (E86.0)	3	0.17%
Injury of elbow (S59.90)	3	0.17%
Metabolic disorder, unspecified (E88.9)	3	0.17%
Pneumothorax (J93.9)	3	0.17%

2022 Annual Report Mukwonago Fire Department

Unspecified chronic gastritis with bleeding (K29.51)	3	0.17%
Acute bronchitis, unspecified (J20.9)	2	0.11%
Acute bronchospasm (J98.01)	2	0.11%
Appendicitis, acute (K35.80)	2	0.11%
Cardiac Chest Pain (STEMI) Lateral Wall (itICD.078)	2	0.11%
Cardiac Chest Pain (STEMI) other sites (I21.2)	2	0.11%
Croup (J05.0)	2	0.11%
Esophageal obstruction (K22.2)	2	0.11%
Gunshot (itICD.048)	2	0.11%
Injury of abdomen (S39.91)	2	0.11%
Intracranial injury, unspecified (S06.9)	2	0.11%
Labor (itICD.049)	2	0.11%
Not Recorded	2	0.11%
Other reduced mobility (Z74.09)	2	0.11%
Psychoactive substance related disorders, other (F19)	2	0.11%
RSV (B97.4)	2	0.11%
Subdural hemorrhage, traumatic (S06.5)	2	0.11%
Suffocation (1); or Asphyxia (2) (T71.9)	2	0.11%
Unspecified infectious disease (B99.9)	2	0.11%
Uterine or vaginal bleeding, abnormal (N93.9)	2	0.11%
Abdominal aortic aneurysm, ruptured (I71.3)	1	0.06%
Angina, unstable (I20.0)	1	0.06%
Constipation (K59.00)	1	0.06%
Foreign body in digestive system, part unspecified (T18.9)	1	0.06%
Foreign body in respiratory tract, part unspecified (T17.9)	1	0.06%
GERD (K21)	1	0.06%
Hypovolemia (E86.1)	1	0.06%
Injury of foot (S99.92)	1	0.06%
Injury of nose (S09.92)	1	0.06%
Labor and Delivery, uncomplicated delivery (O80)	1	0.06%
Melena (K92.1)	1	0.06%
Migraine (G43.9)	1	0.06%
Nonspecific Inhalant disorders (F15)	1	0.06%
Ocular pain, unspecified eye (H57.10)	1	0.06%
Opioid related disorders (F11)	1	0.06%
Pre-eclampsia (O14.9)	1	0.06%
Pregnancy with contractions (O62.0)	1	0.06%
Respiratory distress of newborn (P22)	1	0.06%
Respiratory failure, unspecified (J96.9)	1	0.06%
Unspecified visual disturbance (H53.9)	1	0.06%

Total	1809	100%
--------------	-------------	-------------

2022 CPR Report

The CPR program at the Mukwonago Fire Department has continued to provide Mukwonago Fire Department personnel and the public the opportunity to become CPR certified. The CPR program at MFD has continued to adapt to the needs of MFD and the community by providing both in-person classes and hands on checkoffs for online courses.

For the 2022 year we taught 16 CPR classes, which is double the number taught in 2021, with a total number of 33 students. 11 of those students were MFD personnel. The classes for MFD personnel are primarily taught while the personnel are on shift. This saves time and money for both the department and the student. We also provided 2 in person courses (14 students) and 3 online checkoffs for 8 students throughout the year.

The program had multiple expenses over the course of the year. We had multiple AED trainers in many stages of disrepair that required replacement. 4 new AED trainers were purchased at a total cost of \$462. The new devices provide uniformity to the training and can be used for Spanish speaking students. The department MFD also purchased 30 online courses at a cost of \$975 to provide to MFD personnel. Overall, we had a financial difference of negative \$597, for the 2022 year.

The Mukwonago Fire Department

CPR Program

1111 Fox Street
Mukwonago, WI 53149
Phone: (262) 363-6426
Email: learncpr@mukwonagofire.org

2022 CPR Expense Report

MUKWONAGO FIRE DEPARTMENT CPR PROGRAM

Healthcare Provider 3 Hours	Instructors: \$30/hour
Heartsaver CPR/AED: 5 hours	
Heartsaver CPR/AED/First Aid: 9 hours	
Online Check offs 2 hours	

AHA BLS

Date	Students	Instructor	Deposits	Withdrawals
			\$0.00	\$0.00
			\$0.00	\$0.00
		0		\$0.00
		0	\$0.00	\$0.00
		0	\$0.00	\$0.00
		0	\$0.00	\$0.00
		0	\$0.00	\$0.00
		0	\$0.00	\$0.00
		0	\$0.00	\$0.00
			\$0.00	\$0.00
			\$0.00	\$0.00
			\$0.00	\$0.00
			\$0.00	\$0.00

AHA BLS online Check off

Date	Students	Instructor	Deposits	Withdrawals
6-Apr	1	On shift	\$0.00	\$0.00
7-Apr	1	On shift	\$0.00	\$0.00
18-May	2	On shift		\$0.00
6-Jun	2	On shift	\$0.00	\$0.00
3-Jul	3	On shift	\$0.00	\$0.00
8-Jul	1	On shift	\$0.00	\$0.00
13-Jul	1	On shift	\$0.00	\$0.00
17-Jul	1	On shift	\$0.00	\$0.00
31-Aug	1	On shift	\$0.00	\$0.00
22-Aug	1	On shift	\$0.00	\$0.00
12-Sep	1	On shift	\$0.00	\$0.00
			\$0.00	\$0.00

Heartsaver CPR/AED

Date	Students	Instructor	Deposits	Withdrawals
11-Aug	8	3	\$720.00	\$150.00
14-Dec	6	2	\$540.00	\$300.00

Heartsaver CPR/AED Online checkoff

Date	Students	Instructor	Deposits	Withdrawals
13-Apr	1	2	\$25.00	\$60.00
15-May	2	2	\$60.00	\$60.00
30-Sep	5	2	\$125.00	\$60.00

Equipment Purchases

Date	Supply	Quantity	Cost
16-Mar	AED trainer	4	\$462
16-Mar	Bulk BLS code	30	\$975

Payments	\$1,470.00
Costs	\$630.00
Supplies	\$1,437.00
	-\$597.00

Fire/EMS Trainings 2022

Training 01/01/2022 to 12/31/2022

Assignment Name	Duration (hours)
05 - FF Personal Protective Equipment	1.00
08 - Ground Ladders	10.75
13 - Hose Operations & Hose Streams	21.50
14 - Fire Suppression	15.00
17 - Tech Rescue Support & Vehicle Extrication Operations	32.00
24 - Analyzing the Incident	10.50
27 - NIMS-ICS	4.00
ACLS Recertification	45.00
Administrative/Office Work	97.00
ALS Skills Testing	16.50
Ambulance Orientation	36.00
Basic Vent Training	1.00
Basic Vent Training part 2	1.50
Basic Vent Training part 4	1.00
Bleeding Control	3.00
Blood Glucose	1.05
BLS Skills Training	74.00
Board Meeting	2.00
Chainsaws	9.00
Chief Officer Meeting	1.50
Compressor Operation	5.50
CPR Recertification	13.00
De-escalation Article	0.50
Doty Belt	1.40
Drive on Roadway, NFPA 1002, 4.3	19.50
Driver Operator Engine/Pumper, NFPA 1002, Chapter 5	4.00
Emergency Management	7.75
Emergency Response to Terrorism (MOD #1)	3.00
Emergency Services Instructor Recertification	2.00
EMS Abdominal Trauma Advanced	2.00
EMS Acute Coronary Syndrome (Advanced)	5.00
EMS Acute Coronary Syndromes	5.00
EMS Acute Respiratory Distress Syndrome Advanced	1.00
EMS Airway Management Basic	1.00
EMS Allergic Reaction Management	6.00
EMS Allergies and Anaphylaxis Advanced	6.00
EMS Allergies and Anaphylaxis Basic	6.00

2022 Annual Report Mukwonago Fire Department

EMS Amputation Injuries Advanced	6.00
EMS Assessing the Patient with Major Trauma	6.00
EMS Assessment and Treatment of Submersion Injuries	1.00
EMS Asthma Advanced	5.00
EMS Back Injury Prevention	6.00
EMS Basics of EMS Operations at a Mass Casualty Incident	2.00
EMS Behavioral Emergencies Advanced	1.00
EMS Bleeding and Shock Advanced	7.00
EMS Burn Management Basic	3.00
EMS Calcium Channel Blocker Overdose (Advanced)	6.00
EMS Carbon Monoxide Poisoning	2.00
EMS Cardiac Emergencies Basic	6.00
EMS Cardiovascular Anatomy & Physiology Review	4.00
EMS Cervical Spine Injuries Part 1 (Advanced)	1.00
EMS Clinical Decision-Making	6.00
EMS CNS Injuries Advanced	1.00
EMS Communication and Documentation	1.00
EMS Crime Scene Awareness	12.00
EMS Cyanide Poisoning (Advanced)	5.00
EMS Dementia (Advanced)	1.00
EMS Detailed Physical Exam	7.00
EMS Diabetic Ketoacidosis Advanced	1.00
EMS Driving Safety	13.00
EMS Ecstasy Abuse Management (Advanced)	1.00
EMS Emergency Care for Electrical Burns	6.00
EMS Emergency Response to Terrorism (MOD #1)	6.00
EMS Endocrine System Emergencies Advanced	2.00
EMS Endocrine System Emergencies Basic	3.00
EMS Environmental Emergencies Basic	1.00
EMS Epilepsy	3.00
EMS Femur Fractures	2.00
EMS Geriatric Behavioral Emergencies	11.00
EMS Geriatric Emergencies Basic	2.00
EMS Geriatric Hip Injuries	7.00
EMS Gunshot Wounds	2.00
EMS Heat Illness and Emergencies	1.00
EMS Hip Fractures	1.00
EMS HIPAA Awareness	1.00
EMS Hypothermia Assessment and Treatment	1.00
EMS Immunology	6.00
EMS Incident Command System	2.00
EMS Intro to Arrhythmias: Tachy-arrhythmias and Fibrillation	1.00
EMS Introduction to Hazardous Materials	24.00

2022 Annual Report Mukwonago Fire Department

EMS Managing Cardiac Arrest: During and After Resuscitation	4.00
EMS Managing Chronic Care Patients	1.00
EMS Medical, Ethical, and Legal Issues	6.00
EMS Non-Traumatic Abdominal Injuries	4.00
EMS Non-Traumatic Chest Pain	6.00
EMS Obstetrical Emergencies Advanced (2 hour)	14.00
EMS Obstetrical Emergencies Basic	2.00
EMS Operating an AED	7.00
EMS Opioid Overdose & Naloxone Administration	10.00
EMS Over the Counter Drug Overdoses (Advanced)	5.00
EMS Pain Management (Advanced)	7.00
EMS Pediatric Assessment	3.00
EMS Pediatric Assessment Part 1	6.00
EMS Pediatric Assessment Part 2	6.00
EMS Pediatric Cardiac Arrest Advanced	10.00
EMS Pediatric Cardiac Emergencies (Advanced)	5.00
EMS Pediatric Cardiac Emergencies (Basic)	2.00
EMS Pediatric Fever for the Paramedic (Advanced)	5.00
EMS Pediatric Fluid and Airways (Advanced)	5.00
EMS Pediatric Respiratory Emergencies: Upper Airway for the EMT	3.00
EMS Pediatric Shock Advanced (2 hours)	10.00
EMS Pediatric Trauma Advanced	12.00
EMS Pharmacology Advanced	2.00
EMS Pharmacology Basic	1.00
EMS Pharmacology Special Considerations (Advanced)	2.00
EMS Poisons and Toxins Part 1 (Advanced)	5.00
EMS Poisons and Toxins Part 2 (Advanced)	4.00
EMS Rapid Secondary Assessment	6.00
EMS Renal Failure Advanced	6.00
EMS Respiratory System A&P Review	2.00
EMS Safe Transportation of the Pediatric Patient	5.00
EMS Sepsis	1.00
EMS Sepsis (Advanced)	4.00
EMS Special Challenges in Patient Assessment	12.00
EMS Stroke Assessment & Treatment (Advanced)	1.00
EMS Stroke Assessment and Treatment	5.00
EMS Suctioning the Patient Airway	7.00
EMS Sudden Infant Death Syndrome (SIDS)	3.00
EMS Supplemental Oxygen	8.00
EMS TCA Overdose (Advanced)	4.00
EMS Tracheostomies Advanced	4.00
EMS Traumatic Head and Brain Injuries Advanced	12.00
EMS Traumatic Injury During Pregnancy	5.00

2022 Annual Report Mukwonago Fire Department

EMS Unstable Pelvic Fractures	5.00
EMS Weapons of Mass Destruction	6.00
EMS Weapons of Mass Destruction - An Intro to WMD Agents	3.00
Equipment and Apparatus Review	16.00
Evaluations	19.00
Event Stand by	34.75
File Center	2.50
Final Probation Check off	25.00
Fire Commission Meeting	2.50
Fire Department Study	1.50
Fire Industry Driver Intersection Safety	8.00
Fire Inspections	2.50
Firefighter Fitness, NFPA 1500	27.50
First Aid	5.00
Fleet Program Defensive Driving Strategies for Emergency Vehicle Operators	25.00
Gas meters	16.00
I Gel	3.00
Ice Rescue	64.75
Image trend Video	1.00
Importing 12-lead to Image Trend to the Cloud	0.60
Instructor Training Prep	62.00
Initial Crew Sense Training	0.75
Joint Meeting	52.25
K-Saw	5.00
LDH	20.00
Life Pak 15	7.50
Lucas	3.50
Mabas Meeting	20.00
Mental Health	21.00
Month 1 Area and Ambulance Familiarization	0.50
Month 10 - Ground Ladders	11.50
Month 2 Image trend, Intergraph, 3488	0.50
Month 3- 3461 Familiarization	0.50
Month 5- SCBA and Grass rigs	2.00
Month 7 - Extrication	13.75
Month 8 - Aerial Operations	9.50
Monthly ALS Training	235.50
Monthly Department Meeting	75.00
MSA G1 SCBA Bluetooth Pairing	3.00
Municipal Water Supply	8.00
New Driver Operator Engine/Pumper, NFPA 1002, Chapter 5	1.50
New Driver, Drive on Roadway, NFPA 1002, 4.3	1.50
New employee Orientation	158.50

2022 Annual Report Mukwonago Fire Department

New Extrication Tools	9.50
New Preplan	6.00
NFPA 1001 Vehicle Extrication	15.00
NFPA 1410 Drills	99.50
NFPA 1500 Driving Safety	2.00
Officer Meeting	104.00
Oxygen and IV bag set up	3.50
Parade Detail	56.00
Paramedic Orientation	6.00
Ped Transport system for cot (ACR)	3.50
POP Checkoff	12.00
POP Orientation	8.75
Power Pro 2 In-service Video	7.00
Pre-Construction	17.25
Protective Services Committee	2.75
Public CPR	19.00
Public Education NFPA standards	16.00
Public Relations/Education	181.25
Pumper 04 Positioning Apparatus	1.00
Pumper 10 Operating Fire Pumps	6.00
RDC Training online	8.50
Recruit Testing	41.00
Safety Committee	3.00
Sawzall (reciprocating saw)	5.00
Spear Needle Decompression	4.00
Splints	5.50
Stair Chair/Cot/Power load	3.00
Strategic Planning	0.75
Tickets	1.00
Town Board Meeting	32.25
Triple Layer	5.50
Tylenol	1.00
Vent Training part 4	1.00
Village Board Meeting	6.00
Village Committee of the Whole Meeting	7.50
Village Development Meeting	39.50
Water Rescue Training	30.00
Waukesha Fire Chief's Assoc	10.75
WCC Transition	0.50
Wildland Firefighting	70.50

Total	2724.05
--------------	----------------

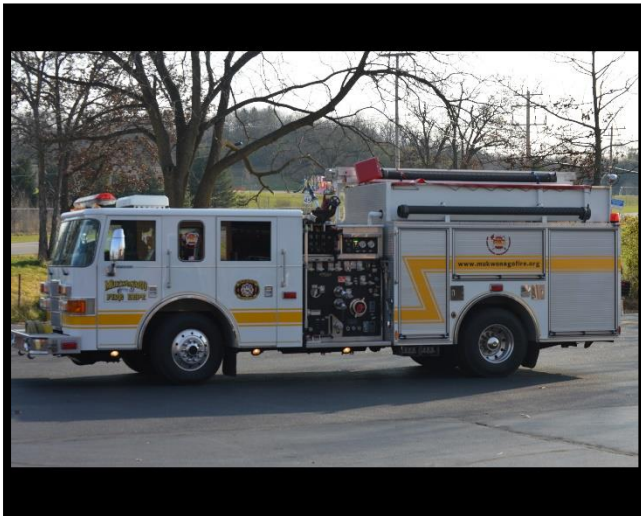
The above chart indicates all the hours of training, meetings, and personal development MFD members attend throughout the last year. Emergency services are very demanding, and continuous training is required to keep up with ever changing challenges members will encounter. A total of 2,724.05 hours of training completed for 2022. Average of 77.83 hours / employee based off 35 employees.

Engines



Vehicle: 3461 – Rosenbauer Commander Pumper-Tender
Year Purchased: 2021
Approximate Cost: \$ 740,000
Replacement Year: 2046
Replacement Cost: \$1,500,000

Vehicle: 3462 – 2002 Pierce Enforcer
Year Purchased: 2002
Approximate Cost: \$ 285,000
Replacement Year: 2026
Replacement Cost: \$ 850,000 (Pumper-Tender)



Vehicle: 3463 – 2001 Pierce Enforcer Rescue Style Pumper
Year Purchased: 2008
Approximate Cost: \$ 198,000
Replacement Year: 2026
Replacement Cost: \$ Sell unit to downsize fleet

Aerial Apparatus

Vehicle: 3471 – Rosenbauer Cobra 101'
Year Purchased: 2013
Approximate Cost: \$ 775,000
Replacement Year: 2038
Replacement Cost: \$ 1,500,000



Specialty Apparatus



Vehicle: 3482 – Ford F350
Year Purchased: 2016
Approximate Cost: \$ 37,819
Replacement Year: 2031
Replacement Cost: \$ 66,000

Vehicle: 3484 – 2022 John Deere and Trailer
Year Purchased: 2022
Approximate Cost: \$ 35,000 w/ trailer
Replacement Year: 2037
Replacement Cost: \$ 45,000



Water Operations (Ice and open water)



Vehicle: 3496 – 1998 Rescue One
Year Purchased: 1997
Approximate Cost: \$ 13,000
Replacement Year: 2024
Replacement Cost: \$50,000

Personnel Vehicles



Vehicle: 3481 – Chevrolet Silverado 3500
Year Purchased: 2020
Approximate Cost: \$ 50,000
Replacement Year: 2032
Replacement Cost: \$65,000

Vehicle: 3488 – Chevrolet Tahoe
Year Purchased: 2015
Approximate Cost: \$45,000
Replacement Year: 2023
Replacement Cost: \$60,000





Vehicle: Car 1- 2015 Ford Interceptor
Year Purchased: 2014
Approximate Cost: \$30,000
Replacement Year: 2023
Replacement Cost: \$65,000

Ambulances

Vehicle: 3451 – 2022 Horton Ford F550
Year Purchased: 2022
Approximate Cost: \$ 280,000
Replacement Year: 2030
Replacement Cost: \$ 674,000 with Power load and cot



Vehicle: 3452 – 2017 Horton E-450
Year Purchased: 2017
Approximate Cost: \$ 196,000
Replacement Year: 2025
Replacement Cost: \$ 479,000 with Power load and cot

2022 Annual Report Mukwonago Fire Department

Vehicle: 3453 – 2019 Med Tec Ford E-450 Remount
Year Purchased: 20
Approximate Cost: \$ 116,691
Replacement Year: 2027
Replacement Cost: \$ 617,000 with Power load and cot

